

GREEN BAY



# BOTANICAL GARDEN

May-August 2019

**BASK IN  
BUTTERFLIES & BEAUTY  
AT THE  
GARDEN**



# A STUNNING SUMMER AWAITS YOU



©John Oates Photography

**From the unveiling of our first butterfly exhibit to the return of fabulous entertainment in the Billie Kress Amphitheater, you won't want to miss out this summer.**

**Susan Garot, Executive Director**

After a long winter, we're ready for Spring's sunshine and gentle rains to prod us from our winter coats.

We've been studying our survey results from you, our members, as well as some community folks who are not-yet members, and we listened. Our goal is to get you off the couch more often, away from your screens and submerge you in nature.

Let's start with our summer exhibit, Butterflies & Blooms. You told us how much you enjoyed Nature Connects®: Art with LEGO® Bricks last summer. How does an interactive experience with butterflies sound? From June through August, you'll be able to experience the world of native butterflies and the plants they love, and just maybe it'll inspire you to create a pollinator paradise in your own backyard.

Returning after a one-year hiatus is Garden Fair, with a renewed focus on plants and art for your garden. You asked for this event to be free, less cluttered with non-gardening vendors, and we're doing that for you on Friday, May 31 and Saturday, June 1.

We're also bringing back a talented lineup with something for everyone in the Donald J. Schneider Family Grand Garden. Picture yourself on a summer evening, relaxing with good food and drinks, while listening to family-friendly musicians, accompanied by the sights and sounds of nature.

For those of you who can't always commit to certain times, we've added some daily drop-in activities. From cooking classes to garden tours, we're collaborating with Garden Clubs and local chefs to provide one-of-a-kind experiences.

Also returning this summer is free Wednesday evenings. The Garden believes all in our community should have the opportunity to explore the natural world, without the barrier of admission. So, Wednesdays from 4-8 pm will be free this summer, thanks to our friends at BMO Harris Bank.

From the beauty of butterflies to on-stage entertainment, we hope to see you this summer!

# BLOOMING! BOTANICAL BEAUTIES



**Mark Konlock, Director of Horticulture**

Did you know that last fall we planted almost 45,000 new bulbs at the Garden? These beauties, along with the 300,000 existing bulbs and other spring bloomers from crabapples and magnolias to native woodland ephemerals, will be ready for your viewing pleasure in just a few weeks—pending Mother Nature’s attitude in mid-April. Here’s a sampling of what you’ll see when you’re here this spring.

When you arrive, the sultry Flama Verna tulip (red, orange and yellow) sprinkled among The Top 40 daffodil blend will welcome you in the parking lot. As you enter the Fischer Visitor Center, be sure to take a peek at the Cretaceous tulip (yellow and scarlet). This is a unique peony flowering tulip, so you might not recognize it at first glance!

In front of the Schierl Wellhouse is a tulip blend called Calm Cool Collective (white and deep purple), something we can all aspire to and something I hope you’ll feel while walking the grounds. Planted by the Mabel Thome Fountain this year is a blend of Mascotte (light pink) and Honeymoon (white) tulips. These tulips are fascinating and unlike many other tulips because the edges of their petals are fringed.

Framing the Kaftan Lusthaus is a blend of purple and pink peony flowering tulips called Beyond Baroque. Several steps away, the Stumpf Belvedere also has an eye-catching combination of the hot-colored lily flowering tulip, Fire Wings, with the dark maroon fringed tulip Vincent Van Gogh.

Not only will you see some amazing colors this year, but you’ll also learn about different types of tulips available to plant in your own garden beds at home. Blossoms start mid-April, with peak bloom anticipated for Mother’s Day.



## Much Ado About Magnolias

Did you know that our magnolia collection is the only plant collection in Wisconsin that is part of the nationally recognized Plant Collection Network? Since we’re the Frozen Tundra, we’re also the coldest site in the Magnolia Multisite Collection™. The Garden is home to 144 magnolia specimens and 123 different kinds of magnolias.

Our plants represent much of the breeding work of local magnolia hybridizer, Dennis Ledvina. Ledvina’s work concentrated on creating magnolias with later bloom times to reduce the impact of late spring frosts. He helped create cold and hardy magnolias for USDA hardiness zone 4, extended the magnolia bloom period, increased the diversity of bloom color and flower form, and developed a multi-petaled magnolia with significant red and pink color.

Our magnolias bloom around the same time as spring bulbs, so be sure to visit the Magnolia Grove, located near the Matthew Schmidt Garden, to see magnolias you can add to your garden, too.



# SPECIAL EVENTS

See calendar for details on dates, times & prices.



## TASTE BUD savor sip support

**Thursday, May 16 | 5-8 pm**

Savor, sip and support at TasteBud! This culinary event offers you the opportunity to indulge in a sampling of delights from Green Bay area restaurants and caterers.

Stroll through the lush landscape, sipping signature cocktails, wines and brews while mingling among more than 300,000 spring blooms. Enjoy live music by Erin Krebs and Jeff Johnston and a silent auction featuring breathtaking planters, garden art, weekend getaway packages and more!

Visit [GBBG.org/TasteBud](http://GBBG.org/TasteBud) for details.

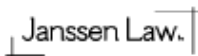
Make your reservation by May 10.

Thank you to our sponsors

Lead

Sustaining

Supporting



Aon

HomeAdvisor  
Michael Raymaker  
Painting Pals LLC  
Renard's Country  
Elegance Inc.

In-Kind



**Friday, May 31 | 12-7 pm**  
**Saturday, June 1 | 8 am-2 pm**

Garden Fair is going back to its roots of being a local, community plant and gardening sale! Shop for plants on Friday and Saturday, dig your holes and water them on Sunday, and you'll have a brand new landscape by Monday. Food and beverages will be available for purchase.

Shop selections from local plant professionals featuring:

- Annuals
- Perennials
- Containers
- Hanging baskets
- Succulents
- Gardening supplies
- Shrubs
- Landscape design services
- Handcrafted garden art
- Specialized plants recommended by our Garden team

### Ask the Experts

Don't know what to plant, how to plant it or where to plant it, just ask the experts!

- Nationally known gardening expert, TV/radio host, author and columnist Melinda Myers
- Local plant professionals
- Our Garden team

Presented by  

Shoppers should bring their own cartons, wagons or boxes for carrying plants. Plant pick-up is a FREE service available to make your shopping effortless—just drop off your purchases and volunteers will hold them until you are ready to venture home. We made pick-up easy with a drive-up area to get you on your way quickly.

Visit [GBBG.org/GardenFair](http://GBBG.org/GardenFair) for details.

Thank you to our sponsor  
Sustaining





# Butterflies AND Blooms

## Butterflies & Blooms flies into the Garden this summer!



Daily, June 1–August 31 | 10 am–5 pm

Surround yourself with friendly pollinators and the plants they love this summer! We're proud to announce our first-ever interactive butterfly exhibit, Butterflies & Blooms. This exhibit will showcase a variety of native butterflies—more than 20 species—that are found in Wisconsin and the Midwest. Visitors of all ages will experience their beauty and radiance up close, while also learning about their critical role in our ecosystem and how we can best support our flying friends at home.

The 1,800-square-foot butterfly house will be located in the garden patch across from the Les & Dar Stumpf Hobbit House. 300 new butterflies will arrive each week for a total of more than 4,500 butterflies throughout the entire summer. On any given day, 500 or more butterflies will be fluttering around the house for your viewing pleasure.

Beyond seeing these butterflies in action, various family-friendly drop-in activities mixing pollinators, plants and play will delight your senses:

- Feed a monarch with a yummy nectar snack or get a closer look at one of their many feeding stations.
- Examine the gorgeous details of butterfly wings through a microscope at the Discovery Station.
- Watch butterflies emerge from their chrysalises. Newly hatched butterflies will be released and take flight each day.
- Explore the house's colorful indoor garden with more than 1,500 annual and tropical plants of 20 different species.

Outside the butterfly house, you'll stroll through our native pollinator garden and discover plants perfect for caterpillars, butterflies and other pollinators. You'll also learn how you can help increase pollinator populations by making your own pollinator paradise at home.

We can't wait for you to visit and be inspired by pollinators and plants this summer!

Visit [GBBG.org/Butterflies](http://GBBG.org/Butterflies) for exhibit details.

### Bounding Butterflies

Everyone knows the Monarch butterfly, but there are more than 150 butterflies native to Wisconsin. During Butterflies & Blooms, we'll be featuring more than 20 species of Wisconsin butterflies. Check out two of these bounding beauties.



### Red Admiral

Often sighted | Late June–early July

Caterpillar host plants | Plants in the Nettle family, including stinging nettle, tall wild nettle and wood nettle

Adult nectar plants | Sap from trees, common milkweed, aster

Wingspan | 1.75–3 inches

Fun fact | Adult Red Admiral butterflies hibernate in the winter and will feed on bird droppings.



### Eastern Tiger Swallowtail

Often sighted | June–early September

Caterpillar host plants | Wild cherry, basswood, birch, willow

Adult nectar plants | Wild cherry, lilac, milkweed, Joe-Pye weed

Wingspan | 2.5–4.5 inches

Fun fact | While the male butterflies are predominately yellow in color, female butterflies can be yellow like the male or black with dark stripes.



# SPECIAL EVENTS

See calendar for details on dates, times & prices.



An eclectic variety of talented regional and national musicians will grace the Billie Kress Amphitheater surrounded by stunning views of the Schneider Family Grand Garden. A variety of food from local caterers and beverage options will be available for purchase.  
 No carry-ins allowed.

**Sunday, June 9 | Vocal Trash**  
 1-1:45 pm

For all ages! Make your own instruments and music.  
 2-3:45 pm  
 "Glee, with a kick" using recycled instruments.

**Saturday, June 29 | Simply Elton**  
 A one-of-a-kind Sir Elton John tribute experience.

**Saturday, July 27 | Boy Band Review**  
 90's Boy Band hits.

**Sunday, August 11 | Buckets of Rain**  
 Relive hits from the legendary Bob Dylan.

**Saturday, August 17 | Sounds of Nashville**

Media Sponsors **Y100** **93.5 99.7 DUKE FM**  
 Your favorite country tunes performed acoustically by the songwriters themselves. Featuring all-new songwriters!

**Sunday, August 25 | GrassRootsJam**  
 Back-to-your-roots bluegrass, Americana and jam music presented in partnership with Willems Marketing and Events, producers of Mile of Music.

**Saturday, September 14 | Brews, Bistros & Bonfires featuring Arch Allies** Presented by   
 Craft brew samples and music with Arch Allies (tributes to Journey, Bon Jovi, Styx, Boston, REO Speedwagon, Def Leppard).

Must be 21 and older to attend.

Visit [GBBG.org/Concerts](http://GBBG.org/Concerts) for concert details.



**Thursdays**  
**June 20 & 27, July 11, 18 & 25, August 1, 8 & 15**

Surrounded by spectacular views of the Schneider Family Grand Garden, music lovers across all genres and generations will enjoy live music from local musicians in the Billie Kress Amphitheater.  
 No concert or program on July 4.

**Seeds to Snacks**  
 4:30-6:30 pm

Dig into gardening activities and create a fresh garden snack to enjoy from our harvest each week.  
 Weather permitting.

**Picnic in the Garden**  
 5-7:45 pm

Feel free to bring in your own picnic to enjoy before and during the concert.  
 No beverage carry-ins allowed.

The Garden will feature a small concessions area with popcorn and beverages. Bar stations will offer local brews and botanically inspired cocktails. A variety of sandwiches, snacks and desserts will be available for purchase from Not By Bread Alone. La Java will be serving coffee, lattes, fresh lemonade and iced tea. Families and friends can enjoy drop-in activities and lawn games in the Schneider Family Grand Garden.

**6-6:30 pm | Opening Act**

**6:45-7:45 pm | Headlining Act**

Visit [GBBG.org/Concerts](http://GBBG.org/Concerts) for concert details.

Thank you to our sponsors

Lead



Supporting



Patron

**Rawson & Mary Price**



**June 5–August 28**

**Wednesday Cookouts | 11 am–1 pm**

Get a midday refresh by spending your lunch break surrounded by the beauty of nature. Select produce is grown at the Garden in partnership with the N.E.W. Master Gardeners' Association.

**Free Admission | 4–8 pm**

Explore Butterflies & Blooms (until 5 pm), enjoy a picnic, play in the Nielsen Children's Garden, go on a scavenger hunt and check out a S.E.E.D. Pack.

**Children's Discovery Station | 4–6 pm**

Come to the Nielsen Children's Garden and enjoy fun, hands-on activities.

**Make & Take Herbal Infusion**

**June 12, July 10 & August 14 | 6–7 pm**

Discover a wide variety of herbs, enjoy a demonstration and create an herbal infused item to take home.

**Ask the Expert | July 17–August 21 | 1–1:30 pm**

Visit a different garden each week to learn tips and tricks from our Horticulture team.

## Members

**Corporate Partner Employee Day**

**Sunday, May 5**

Employees of our Corporate Partner Members are invited to bring their immediate family to enjoy the Garden for free. Present your Corporate ID or business card to Guest Services upon arrival.

**Member Swap Day**

**Sunday, May 19**

Experience other local attractions! Members of the Garden, Neville Public Museum, National Railroad Museum and The Automobile Gallery invite you to visit all attractions for free on Member Swap Day.

**Member-Only Tours**

Step behind the scenes to get an exclusive look at garden areas with our team.

## Volunteers

**We need you!**

Volunteers are the heart and soul of the Garden. Without our volunteers, we wouldn't be able to host our variety of special events or share this beautiful oasis with the community!

Areas of opportunity: special events, gardening, facility maintenance, educational programs, butterfly house.

Did you know the Garden has a volunteer appreciation program? We like to show our appreciation to our family of volunteers by giving back. Volunteers get a small thank you once they reach 25, 50, 75, 100 or more hours in a calendar year, starting with their very own permanent Garden name badge.

It's easy to sign up! Just complete a volunteer application on our website at [GBBG.org/Volunteer](http://GBBG.org/Volunteer).

**Weed & Feed**

Help us keep the Garden looking its best as we welcome thousands of visitors! Work side-by-side with staff as they guide you through the tasks for the evening and then enjoy a delicious meal provided by the Garden.

RSVP to 920.491.3691 ext. 105 or [volunteer@gbbg.org](mailto:volunteer@gbbg.org)

## Family & Adult Education

**Family Programs**

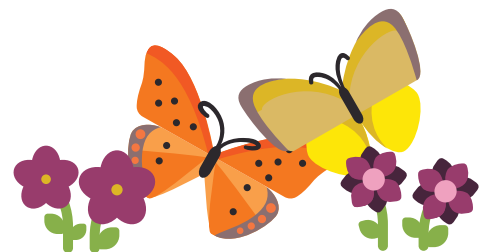
Hands-on family workshops, nature hikes, story times and more.

**Summer Camps**

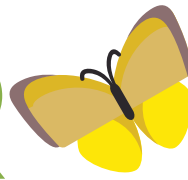
For ages 6–16, participate in one-day, two-day or weeklong camps! Camps include games, activities, crafts, songs and more related to the theme.

**Adult Programs**

Lectures, tours and workshops related to gardening, cooking, crafting and more.



# Drop-In SUMMER ACTIVITIES



Open Daily  
June–August | 9 am–8 pm  
July 4 | 6 pm closure with limited programs



## Self-Guided Daily Drop-In Activities

Free/GBBG Member  
Garden Admission/General Public unless otherwise noted

### Butterflies & Blooms | 10 am–5 pm

A live butterfly experience showcasing native pollinators and the plants they love.

### Garden Discovery Boxes | 10 am–12 pm

Boxes placed throughout the Garden containing games and activities for kids.

### Butterfly Feeding | 1–3 pm

Receive a feeding stick dipped with a tasty butterfly treat. Donations accepted.

### Scavenger Hunts | Anytime

Hunt for clues and discover plants and animals in the Garden.

### S.E.E.D. Packs | Anytime

Search, Explore, Experience and Discover the Garden! Packs include short lessons, games and observation activities.

## Monday

### Express

#### Garden Tour

Jun 3–Aug 26  
10–11 am

Guided tour of the Garden.

Limit 20, first come, first served. Contact us for groups of 10 or more.

### Family Nature Hike

Jun 10–Aug 26  
4:30–5:30 pm

Guided exploration of plants and animals in the Garden.

## Tuesday

### Children's Story Time

Jun 11–Aug 27  
10–10:30 am

Nature-themed stories and activities.

## Wednesday

### Getaway

#### Wednesdays

Jun 5–Aug 28

### Cookouts

11 am–1 pm

\$6/GBBG Member  
\$7/General Public

Free Admission  
4–8 pm

Discovery Station  
4–6 pm

Nature activities for families.

Ask the Expert  
July 17–Aug 21  
1–1:30 pm

Tips and tricks from our Garden Team

## Thursday

### Seeds to Snacks

Jun 20–Aug 15  
4:30–6:30 pm

Gardening activities and freshly harvested snacks.

Sanimax  
Concert Series  
Jun 20–Aug 15  
6–7:45 pm

Free/GBBG Member  
Garden Admission/  
General Public  
\$20/Family (two adults and children 18 & under in the household or grandchildren)

July 4 | No Sanimax  
Concert or Seeds  
to Snacks.

## Friday

Self-guided daily drop-in activities available.

## Saturday

### Discovery Station

Jul 13–Aug 17  
10 am–12 pm

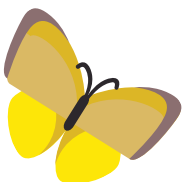
Nature activities for families.

## Sunday

### Garden to Table Chef Series

Jul 14–Aug 18  
1 & 2 pm

30-minute cooking demo with a tasty treat.





# SUMMER CALENDAR

## May

Thursday, May 2

### Proper Tree Planting

(LIR) | 6-7:30 pm  
Steve Johnson  
Selner Tree & Shrub Care  
\$5/GBBG Member  
\$7/General Public

Sunday, May 5

### Corporate Partner Employee Day

9 am-7 pm

Sunday, May 12

### Mother's Day

9 am-7 pm   
Free admission for moms.

Monday, May 13-

Sunday, May 19

### National Public Gardens Week

Free admission on Friday,  
May 17 | 9 am-7 pm

Monday, May 13

### Advanced Vegetable Gardening

(LIR) | 6-7:30 pm  
Lynn Clark and  
Jim Fameree,  
N.E.W. Master Gardener  
Volunteers  
Pre-registration: \$7/Person  
At the Door: \$10/Person  
Presented in partnership  
with Extension Brown  
County and N.E.W. Master  
Gardeners' Association

Tuesday, May 14

### Members-Only Tour | Green Bay Blossoms

(R) | 5-6:30 pm  
Mark Konlock, Director of  
Horticulture  
Free/GBBG Member

Thursday, May 16

### TASTE BUD

5-8 pm  
\$40/GBBG Member  
\$55/General Public  
Register by May 10.

Sunday, May 19

### Member Swap Day

9 am-7 pm

Tuesday, May 21

### Native Plants to Attract Pollinators

(LIR) | 6-7:30 pm  
Claudia Schultz, Al Nass  
& Annette Weissbach,  
N.E.W. Master Gardener  
Volunteers

Pre-registration: \$7/Person

At the Door: \$10/Person  
Presented in partnership  
with Extension Brown  
County and N.E.W. Master  
Gardeners' Association

Monday, May 27

### Memorial Day

9 am-7 pm  
Free admission for military  
personnel and veterans.

Wednesday, May 29

### Decorating Outdoor Spaces

(LIR) | 6-8 pm  
Vickie Linssen, Decorating  
Consultant  
\$5/GBBG Member  
\$7/General Public

Friday, May 31

### GARDEN FAIR

12-7 pm  
Free admission to the event  
in the parking lot. Half-price  
admission into the Garden.

## Don't delay!

Register right away as  
classes may fill quickly.  
We also value our  
instructors' time, so classes  
may risk being canceled  
due to low early enrollment.

Thank you!

## June


Saturday, June 1

### GARDEN FAIR

8 am-2 pm  
Free admission to the event  
in the parking lot. Half-price  
admission into the Garden.

Tuesday, June 4

### Nature's Way Tour

(LIR) | 5-6:30 pm   
Nature's Way Staff  
\$5/GBBG Member  
\$7/General Public  
Class takes place off site  
at Nature's Way,  
825 Challenger Drive

Sunday, June 9

### GRAND CONCERT Series

#### Vocal Trash

Mixture of "Glee" & "Stomp"  
1-4 pm  
\$10/Adult GBBG Member  
\$12/Adult General Public  
\$5/Child (Ages 3-17 with  
one paid adult ticket)  
At the Door: \$5 more per  
ticket. Based on availability.

Wednesday, June 12

### Make & Take Herbal Infusion

(D) | Drop in any time  
from 6-7 pm.  
\$5/Person

Weed & Feed

(VIR) | 5-8 pm

Thursday, June 13

### All About Emerald Ash Borer

(LIR) | 6-7:30 pm  
Steve Johnson,  
Selner Tree & Shrub Care  
\$5/GBBG Member  
\$7/General Public

W=Workshop  
L=Lecture  
YF=Youth & Family  
R=Registration Required  
D=Drop-In  
V=Volunteer

Sunday, June 16

### Father's Day

9 am-8 pm   
Free admission for dads.

Tuesday, June 18 & Wednesday, June 19

### Camp GBBG | KIDchen Camp Session 1

(YFIR) | 9:30 am-3:30 pm  
2-day camp | Ages 9+  
Bridgett Lowery, 416  
\$115/GBBG Member  
\$130/General Public  
Register by June 11

Thursday, June 20

### Camp GBBG | KIDchen Camp Session 2

(YFIR) | 9:30 am-3:30 pm  
1-day camp | Ages 9+  
Bridgett Lowery, 416  
\$60/GBBG Member  
\$75/General Public  
Register by June 13

### Sanimax CONCERT Series

### Opener | TBA Headliner | Big Mouth & The Power Tool Horns

Eclectic mix of jazz  
and blues  
6-7:45 pm

Monday, June 24


### Camp GBBG | Butterfly Biologist Session 1

(YFIR) | 9:30 am-3:30 pm  
Ages 6-9  
\$35/GBBG Member  
\$45/General Public  
Register by June 17

Tuesday, June 25

### Farmers' Market Appetizers

(WIR) | 6-8 pm  
Bridgett Lowery, 416  
\$32/GBBG Member  
\$38/General Public

**Tuesday, June 25**   
**Green Bay Kids' Day**  
9 am–8 pm  
Children 17 and under  
receive free admission with  
one paid adult.

**Wednesday, June 26**  
**Camp GBBG | Butterfly  
Biologist Session 2**  
(YFIR) | 9:30 am–3:30 pm  
Ages 9–12  
\$35/GBBG Member  
\$45/General Public  
Register by June 19

**Thursday, June 27**



**Opener | Lawrence  
Conservatory of Music**  
Classical  
**Headliner | Michael  
Mizrahi & Friends from  
Lawrence Conservatory  
of Music**  
Classical  
6–7:45 pm

**Saturday, June 29**



**Simply Elton**  
Sir Elton John tribute  
7–9 pm  
**Lawn Seating**  
\$20/GBBG Member  
\$25/General Public  
\$10/Child (Ages 3–17 with  
one paid adult lawn ticket)  
**Cowles Terrace Seating**  
\$30/GBBG Member  
\$35/General Public  
Child discount not available  
At the Door: \$5 more per  
ticket. Based on availability.


**Sunday, June 30**

**Guided Meditation**  
(D) | 4–5 pm  
Ekaterina Bouyear,  
Healthy Living Consultant  
Free/GBBG Member  
Garden Admission/  
General Public

# July

**Mondays, July 1, 8,  
15, 22, 29**

**Hatha Yoga**  
(R) | 5:30–6:30 pm  
Tree Janzen,  
Tree's Yoga  
Full series:  
\$40/GBBG Member  
\$45/General Public  
One Day: \$10/Person

**Thursday, July 4**   
**Independence Day**  
9 am–6 pm  
Free admission for military  
personnel and veterans.

**Tuesday, July 9**  
**Camp GBBG | KIDchen  
Camp Session 3**  
(YFIR) | 9:30 am–3:30 pm  
1-day camp | Ages 9+  
Bridgett Lowery, 416  
\$60/GBBG Member  
\$75/General Public  
Register by July 2

**Wednesday, July 10**  
**Make & Take  
Herbal Infusion**  
(D) | Drop in any time  
from 6–7 pm.  
\$5/Person

**Weed & Feed**  
(VIR) 5–8 pm

**Thursday, July 11**



**Opener | Tae Popour**  
Blues, rock and soul  
**Headliner | Kyle Megna  
& The Monsoons**  
Indie, folk and blues with  
a twist of rock  
6–7:45 pm

**Sunday, July 14**  
**Guided Meditation**  
(D) | 4–5 pm  
Ekaterina Bouyear,  
Healthy Living Consultant  
Free/GBBG Member  
Garden Admission/  
General Public

**Tuesday, July 16**  
**Camp GBBG | Butterfly  
Biologist Session 3**  
(YFIR) | 9:30 am–3:30 pm  
Ages 9–12  
\$35/GBBG Member  
\$45/General Public  
Register by July 9

**Members-Only Tour |  
Butterflies & Blooms**  
(R) | 5–6:30 pm  
Ryan Hammes,  
Horticulturist  
Free/GBBG Member

**Wednesday, July 17**  
**Camp GBBG | Butterfly  
Biologist Session 4**  
(YFIR) | 9:30 am–3:30 pm  
Ages 6–9  
\$35/GBBG Member  
\$45/General Public  
Register by July 10

**Thursday, July 18**



**Opener | Lawrence  
Conservatory of Music**  
Classical and jazz  
**Headliner | Erin  
Krebs Quintet**  
Tribute to the women of  
jazz and blues  
6–7:45 pm

**Tuesday, July 23**  
**Winged Wonders—Bats**  
(YFIR) | 7–8:30 pm  
Jamie Kozloski,  
Kingdom Animalia Exotic  
Animal Rescue  
Free/GBBG Member  
\$5/General Public Individual  
\$10/General Public Family

**Tuesday, July 23 &  
Wednesday, July 24**  
**Camp GBBG | KIDchen  
Camp Session 4**  
(YFIR) | 9:30 am–3:30 pm  
2-day camp | Ages 9+  
Bridgett Lowery, 416  
\$115/GBBG Member  
\$130/General Public  
Register by July 16

**Thursday, July 25**



**Opener | Charlie Urick**  
Acoustic soul with R&B  
**Headliner | Ants  
Marching**  
Dave Matthews Band tribute  
6–7:45 pm

**Saturday, July 27**



**Boy Band Review**  
90's boy band tribute  
7:30–9:30 pm  
\$15/GBBG Member  
\$20/General Public  
\$10/Child (Ages 3–17 with  
one paid adult ticket)  
At the Door: \$5 more per  
ticket. Based on availability.

**Monday, July 29**  
**Camp GBBG | Outdoor  
Adventures Weeklong  
Camp Session 1**  
(YFIR) | Jul 29–Aug 2  
9:30 am–12 pm | Ages 6–9  
\$65/GBBG Member  
\$85/General Public  
Register by July 22

**Tuesday, July 30**  
**Butterflies of Wisconsin**  
(LIR) | 6–8 pm  
Rob Zimmer,  
Nature Writer &  
Photographer  
\$5/GBBG Member  
\$7/General Public

# August

**Thursday, August 1**



**Opener | Music for the  
Sake of Music**  
Instrumental music  
**Headliner | Due North**  
A cappella vocal group  
6–7:45 pm



**Monday, August 5**  
**Camp GBBG | Outdoor Adventures Weeklong Camp Session 2**  
 (YFIR) | August 5-9  
 9:30 am-12 pm  
 Ages 9-12  
 \$65/GBBG Member  
 \$85/General Public  
 Register by July 22

**Tuesdays, August 6, 13, 20, 27**

**Improve Your Fitness | The Wonder of Movement**  
 (R) | 11 am-12 pm  
 Gail Wood,  
 Certified Anat Baniel  
 Method® NeuroMovement®  
 Practitioner  
 Four-week series:  
 \$65/GBBG Member  
 \$75/General Public

**Thursday, August 8**



**Opener | Haley Grace**  
 Soulful acoustic guitar  
**Headliner | The Monsters of Grass**  
 Bluegrass and Americana  
 6-7:45 pm

**Sunday, August 11**



**Buckets of Rain**  
 Bob Dylan tribute band  
 5-7 pm  
**Lawn Seating**  
 \$20/GBBG Member  
 \$25/General Public  
 \$10/Child (Ages 3-17 with one paid adult lawn ticket)  
**Cowles Terrace Seating**  
 \$30/GBBG Member  
 \$35/General Public  
 Child discount not available  
 At the Door: \$5 more per ticket. Based on availability.



**Monday, August 12**  
**Camp GBBG | Music & Nature in Harmony Weeklong Camp**  
 (YFIR) | August 12-15  
 9:30-3:30 pm | Ages 12-16  
 \$250/Garden Member  
 \$275/General Public  
 Prior choral or vocal experience recommended, performance on August 15 at 6 pm as Sanimax Concert opener.  
 Register by August 5

**Wednesday, August 14**  
**Camp GBBG | Story Book Adventure: The Lorax Session 1**  
 (YFIR) | 9:30 am-3:30 pm  
 Ages 6-9  
 \$35/GBBG Member  
 \$45/General Public  
 Register by August 7

**Farmory Tour** (LIR) | 4:30-5:30 pm  
 Ryan Hellenbrand  
 \$5/GBBG Member  
 \$7/General Public  
 Class takes place off site at The Farmory, 437 S. Jackson St.

**Weed & Feed**  
 (VIR) 5-8 pm

**Make & Take Herbal Infusion**  
 (D) | Drop in any time from 6-7 pm.  
 \$5/Person

**Thursday, August 15**  
**Camp GBBG | Story Book Adventure: The Lorax Session 2**  
 (YFIR) | 9:30 am-3:30 pm  
 Ages 9-12  
 \$35/GBBG Member  
 \$45/General Public  
 Register by August 8



**Opener | Music & Nature in Harmony Campers**  
**Headliner | John Kelley & Fusion Express Orchestra**  
 Jazz and Broadway tunes  
 6-7:45 pm

**Saturday, August 17**



**Sounds of Nashville**  
 Country songwriters and their hits performed acoustically  
 7-9 pm  
**Lawn Seating**  
 \$25/GBBG Member  
 \$30/General Public  
 \$10/Child (Ages 3-17 with one paid adult lawn ticket)  
**Cowles Terrace Seating**  
 \$40/GBBG Member  
 \$45/General Public  
 Child discount not available  
 At the Door: \$5 more per ticket. Based on availability.

**Sunday, August 18**

**Monarch Butterfly Tagging**  
 (W) | 2-4 pm  
 Charlene Breitlow,  
 Monarch Expert  
 Free/GBBG Member  
 Garden Admission/  
 General Public

**Wednesday, August 21**

**Spontaneous Garden Dishes**  
 (WIR) | 6-8 pm  
 Chef Shelly Platten,  
 Healthy Chef Shell, LLC  
 \$24/GBBG Member  
 \$29/General Public

**Sunday, August 25**



**GrassRootsJam**  
 1-6 pm  
 Bluegrass, Americana and jam music  
 In partnership with Willems Marketing & Events, producers of Mile of Music.  
 \$10/Adult  
 Free/Child (Ages 17 and under with one paid adult)  
 At the Door: \$5 more per ticket. Based on availability.

**September**

**Saturday, September 14**



**Brews, Bistros & Bonfires featuring Arch Allies**  
 70's & 80's classic rock  
 6-9 pm

**Lawn Seating**  
 \$25/GBBG Member  
 \$30/General Public  
**Cowles Terrace Seating**  
 \$40/GBBG Member  
 \$45/General Public  
 Must be 21 or older.  
 At the Door: \$5 more per ticket. Based on availability

**Saturday, September 28**

**Fall Family Festival**  
 9 am-4 pm

**How to Register**

Registration required for all classes and programs except where noted. Register online at GBBG.org or by phone at 920.490.9457. To hold your space, payment is due with registration.

**After You Register**

We will contact you the week of the class to confirm your enrollment. Please dress according to the weather for all outdoor programs. No rain dates are planned.

**Cancelations & Refunds**

Classes canceled due to low enrollment or hazardous weather are refunded automatically. You will be notified by phone about class cancelations. In cases of inclement weather, call 920.490.9457 to check the status of the class. If you must cancel your registration, your fees will be refunded if notice is received at least five days prior to the class. Green Bay Botanical Garden cannot refund fees requested on or after the start date of a class or for sessions missed due to student illness or other personal situations.

# SUPPORTING OUR POLLINATOR FRIENDS

with Plants They Love



## Become a pollinator champion and find the perfect plants for your backyard with these tips from our experts.

**Lindsay Hendricks, Assistant Director of Horticulture**

Did you know that pollinators are responsible for 1 out of 3 bites of food we eat each day? Without pollinators, we would lack the diversity of fruits and vegetables that we enjoy on a regular basis! Since they help provide us with the food we eat, let's help provide them with the food they eat.

Native plants seem to get the most attention as being the most pollinator friendly. However, many non-native annuals and perennials are perfect pollinator plants, too.

When selecting pollinator plants, there are a few things to keep in mind. If possible, choose plants that are food sources for young pollinators (i.e. Monarch caterpillars) and plants that are nectar sources for adult pollinators (i.e. Monarch butterflies). Doing so allows your garden to support the full life cycle of pollinator insects. Plants

located in sunny areas with wind breaks tend to be most appealing, as most insect pollinators require warmth to fly and do not like wind disturbance when feeding. Creating large areas of plants and establishing a continuous bloom throughout the growing season will help attract the largest diversity of pollinators to your garden. As always, eliminate or minimize the use of pesticides as they are harmful to pollinators.

So what are some good plants for our pollinator friends? Check out a few examples of pollinator friendly plants that will be featured in this year's Butterflies & Blooms exhibit. Some of these plants will even be available for purchase at Garden Fair on Friday, May 31 and Saturday, June 1. BEE sure to come check out our tent. We'll see you there!



## Featured Pollinator Plants



### Rose Glow Landmark™ Lantana

Botanical Name | *Lantana camara* 'Balandroglim'  
Common Name | Rose Glow Landmark™ Lantana  
Habit | Annual  
Size | 15–20 in. tall, 18–24 in. wide  
Light | Full Sun  
Bloom Time | June–September

Rose Glow Landmark™ lantana's showy rose pink and yellow toned flowers attract both butterflies and hummingbirds. Fuzzy, scented leaves remain green throughout the season. Thrives in extreme heat, humidity and drought. Deer resistant.

For diversity in bloom color and size | *Lantana* 'Lemon Cream' Little Lucky™, *Lantana* 'White' Lucky™, *Lantana* 'Red' Bloomify™



### Common Milkweed

Botanical Name | *Asclepias syriaca*  
Common Name | Common Milkweed  
Habit | Native perennial  
Size | 2–3 ft. tall, 1 ft. wide  
Light | Full Sun  
Bloom Time | June–August

The flowers of common milkweed are a nectar source for butterflies, while the foliage serves as the primary food source for monarch caterpillars. This native perennial grows easily in average to poor soils and is drought tolerant. Some gardeners may consider its self-seeding and spreading habit too vigorous for manicured gardens. Great for prairies, native plant gardens, meadows or naturalized areas.

For more compact growth | *Asclepias tuberosa* (butterfly milkweed), *Asclepias incarnata* (swamp milkweed), *Asclepias purpurascens* (purple milkweed)



### Burgundy Mirage™ Salvia

Botanical Name | *Salvia greggii* 'Balmirbur'  
Common Name | Burgundy Mirage™ Salvia  
Habit | Annual  
Size | 12–14 in. tall, 14–16 in. wide  
Light | Full Sun  
Bloom Time | June–September (with consistent deadheading)

Burgundy flowers attract butterflies and hummingbirds. The Mirage™ series was bred to be heat tolerant, resulting in an early season and summer-long blooming plant.

For diversity in bloom color and size | *Salvia* 'Ballerina Pink' Fashionista® (perennial), *Salvia guaranitica* 'Amistad', *Salvia guaranitica* 'Black and Bloom', *Salvia patens* 'Blue Angel'



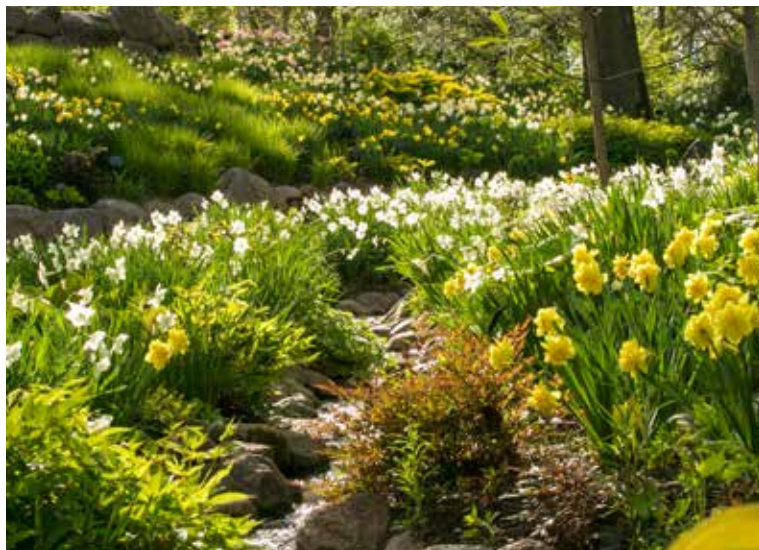
### Millenium Ornamental Onion

Botanical Name | *Allium* 'Millenium'  
Common Name | Millenium Ornamental Onion  
Habit | Non-native perennial  
Size | 15–20 in. tall, 10–15 in. wide  
Light | Full Sun  
Bloom Time | July–August

Rose-purple flowers attract butterflies and honeybees in late summer when the garden is most in need of color. Attractive, shiny deep green foliage adds texture to the landscape. Tolerates a wide variety of soil types and conditions. Excellent deer and rabbit resistance.

For diversity in bloom color and length | *Allium* 'Summer Beauty' (ornamental onion), *Allium thunbergii* 'Ozawa' (Japanese onion), *Allium cernuum* (nodding onion, native)





## Legacy Gifts Help Secure the Garden's Future for Generations to Come

For many of us, the Garden is a place to enjoy all seasons of the year and all seasons of our lives. Your connection to the Garden is timeless when you create a legacy gift, ensuring future generations can experience the amazing beauty and adventure the Garden offers. Essentially, with a legacy gift, you share the joy you experienced at the Garden with countless future guests and members.

The Garden has been blessed to be named a recipient in bequests left by these friends:

### **Catherine Small**

Katie was a Founding Member of the Garden, having joined in 1984. She passed away in 2018.

### **Dr. William & Sonja "Jane" Wanamaker**

Dr. Wanamaker was a Garden board member for nine years and an active volunteer, including winning the Horticulture Volunteer of the Year in 2007. He and Jane were members and donors for nearly 30 years. Dr. W passed away in 2016 and Jane in 2018.

### **Harold and Arleen VandenHeuvel**

Arleen became a friend to the Garden in 2016 during our Perennial Performance Campaign. She followed Harold (deceased in 2013) in 2018.

### **Maxine Seefeldt**

Maxine was a Garden member since 1999 and passed away in 2018.

For information on how you can become a part of the Garden's Perennial Legacy Society, a community of generous and visionary supporters who have pledged a legacy gift to the Garden, contact Cindy Berton, Director of Development, at [cberton@gbbg.org](mailto:cberton@gbbg.org) or 920.491.3691 ext. 104.

## Have Your Event at the Garden

Book your private event at the Garden! Whether indoors or outdoors, your special event, meeting or wedding will be surrounded by breathtaking gardens and refreshing scenes of nature which will surely impress your guests and create a memorable experience.

## Butterfly Birthdays

New this summer! The Garden is offering butterfly-themed birthday party packages. Includes admission to the exhibit for up to 30 guests, a 4-hour room rental, butterfly-themed activities and a special gift for the birthday child.

For information on hosting an event, visit [GBBG.org/Event](http://GBBG.org/Event) or contact our Sales Team at 920.491.3691 ext. 113 or [rentals@gbbg.org](mailto:rentals@gbbg.org).



## Bring Home a Piece of Butterflies & Blooms

Find a variety of butterfly-themed items in the WPS Trellis Gift Shop this summer. We have all things butterflies including garden art, home décor, butterfly nets, insect habitats and more!

## Grow Your Business Through Sponsorship

Be a part of what's happening at the Garden this summer! From our summer exhibit to special events and concerts, share in a variety of unforgettable experiences for visitors of all ages. Connect with people throughout the region, associate your brand with a love of nature and support the unparalleled beauty of the Garden.

Contact Cindy Berton, Director of Development, at 920.491.3691 ext. 104 or [cberton@gbbg.org](mailto:cberton@gbbg.org).

## Calling All Artists

Our Art Committee invites local artists to submit their artwork to be displayed in the Lois O'Harrow Gallery for our summer show. This season's theme is flowers, in any medium.

Visit [GBBG.org/ArtSubmission](http://GBBG.org/ArtSubmission) for submission requirements.



# You Make the Difference



108 Individuals donated more than 9,000 hours in 2018 to give visitors an unforgettable experience at the Garden.

Our volunteers dedicate their time and talent throughout every season to help ensure Green Bay Botanical Garden remains one of the most spectacular places to visit in our northeast Wisconsin community. In 2018, the following volunteers donated between 25–366 hours of their time for a total of 9,312 hours. By donating their time, we saved more than \$229,900 in staff time!

## 24–49 Hours

Kimberly Perry	25.00	Cindy Bayless	38.25
Nicholas Fearing	25.00	Beth Duncan	38.50
Susan Nooyen	25.75	Craig Charlier	39.25
Gail Vande Castle	26.00	Shirley Haskins	41.00
Connie Brauer	26.00	Bill Larsen	41.25
Diane Lenz	26.00	Cheryl Zimmerman	41.50
Glenn Spevacek	26.25	Jeannifer Jensen	42.00
Barb Beaver	26.75	Darlene Charneski	44.00
Terese Boeck	27.00	Denise Badour	44.00
Veronica Flower	28.00	Marcia Collette	44.50
Anne Basten	28.50	Greg Metzler	45.00
Dick Rankin	29.00	Liz Obenberger	46.50
Sally Graham	30.00	Mary Silha	46.50
Kathy Hartman	31.00	Michael Smullen	47.00
Kathy Tilot	31.00	Judy Nagel	47.75
Betty Donovan	31.50	Jonie Paye	49.00
Mike Raymaker	31.75	<b>50–74 Hours</b>	
Julia Johnson	32.25	Cookie Oryall	50.00
Marcus Brock	32.75	Mary Vandermause	50.00
Bonnie MacSwain	33.25	Carol Kroscher	51.00
Lise Gammeltoft	33.50	Aleethea Willard	53.00
Nancy Whitfield	35.50	Mike Malchow	53.00
Diane Conway	35.50	Jean Sweetland	57.00
		Diane Aubry	57.50

Mary Van Dyck	58.50	Bob Hutter	109.00
Steven Amenson	59.00	Nancy Kohrman	109.25
Shirley Maenner	60.00	Scott Jacobe	111.00
Linda Jolly	61.00	Carol Zabel	115.00
Tom Aerts	63.50	Ann Wasurick	115.50
Sue Broeren	64.50	Laura Davister	116.50
Jim LeClair	66.50	Bruce Kilmer	117.25
Linda Barrette	69.00	Betty Arendt	120.00
Bill Wangerin	69.25	Sue Ellingson	123.50
Karen Moreaux	70.00	Linda Schulze	124.50
Dale Hutjens	70.00	Shirley Garthwaite	124.75
Jan LaSota	70.50	Joe Hooyman	132.00

## 75–99 Hours

Dan Brunmeier	76.25	Robert Stark	135.00
Gerri Gribi	77.00	Ricki Krautkramer	137.25
Linda Tingley	78.75	Mary Borley	143.50
Nancy Jones	79.00	Barb Griffin	145.50
Anita LeClair	79.50	Kathy Amenson	149.50
Emma Wacek	81.75	Leroy Zaddack	153.00
Jan Hendricks	83.00	Barb Perrus	158.00
Carolyn Haglund	83.50	Mike Duncan	160.50
Cathy Jacobs	88.00	Ellie Thomas	170.00
John Oates	89.50	Deb Freeman	173.25
Lee Richardson	90.00	Carol Zellner	174.00
Gene Arendt	91.00	Maureen Ackerman	177.00
Lee Hansen	99.00	Jana Hudson	182.75
<b>100+</b>		Randy Maesch	184.50
John Jacobs	100.00	Don Jensen	192.50
Tom Mertens	101.25	Jim Tubbs	199.25
Sally Peck	103.00	Dave Sorenson	201.00
Marcia Ward	105.50	Dale Bartel	225.75
Pam Charlier	106.00	Bob Yashinsky	327.00
		Don Giese	366.00

## Fan Photos

Here are some of our favorites from winter. Post your photos of the Garden on social media with [#mygbgarden](https://www.facebook.com/mygbgarden) or tag us. They may end up in our next newsletter!



alexstodola



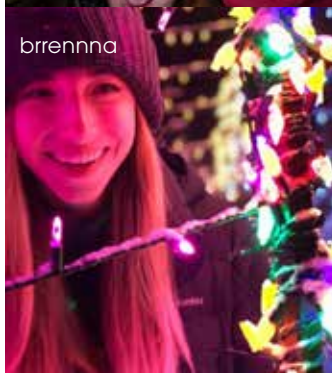
erick\_ramos97



whitleywinehouse



nurse\_j\_j



brennna



evanfreimuth



littleleaderdog



tiajohnsononair



# Board of Directors

**Executive Director**  
Susan Garot

**Board of Directors**  
Judy Nagel, Chair  
Diane Conway, Vice Chair  
Rob Servais, D.C., Secretary  
Bill Larsen, Treasurer  
Jonie Paye, Past Chair

**Directors**  
Tom Arndt  
Carol Faltynski  
Cheri Galecke  
Lise Gammeltoft  
Lee C. Hansen  
Kathy Hartman  
Nobert Hill  
Robert J. Janssen  
Julia Johnson  
Pat Koleske  
Laura Nelson, M.D.  
Mike Raymaker  
Patricia Schneider  
Terri Trantow  
Bill Wangerin

**Advisors**  
Michael Salvo  
Jack Swelstad, M.D.



©Amenson Studio

  
GREEN BAY  
**BOTANICAL GARDEN**  
2600 Larsen Rd. | Green Bay, WI 54303

NON PROFIT ORG  
US POSTAGE  
**PAID**  
GREEN BAY WI  
PERMIT NO. 165



## What's Inside

A Stunning Summer Awaits You  
Bloomin' Botanical Beauties  
Supporting Our Pollinator Friends  
and More!

## Upcoming Events

TasteBud  
Garden Fair  
Butterflies & Blooms  
Les Stumpf Ford Grand Concert Series  
Getaway Wednesdays  
Sanimax Concert Series

For the latest on what's happening  
at the Garden, sign up for our weekly  
e-newsletter and follow us on:

 GreenBayBotanicalGarden  
 @GBBotanicalGarden  
 @GBBotGarden

Visit [GBBG.org](http://GBBG.org) for details on our  
classes, activities, events, volunteering,  
membership and more.