



green bay
botanical
garden

May–August 2021

Growing Together for 25 Years

25 Years and Growing...

As I reflect on the past 25 years since the Garden opened in 1996, I can't help but feel gratitude for...

- the community that Green Bay Botanical Garden has helped grow.
- the support from this community that has enabled the Garden to continue growing.
- all the wonderful friendships we have grown over these 25 years!

And, while we are all about the plants, we really are all about the connections we have made while growing them... plants do truly grow community and make people feel joyful!

We have such an exciting season ahead including lots of celebrating to commemorate our past 25 years and looking ahead to the next 25. While I write this, we're still following the CDC, Wisconsin Department of Health Services and Brown County Public Health Department guidelines. We learned a lot in the past year and believe we can safely hold all our normal events, albeit with some revisions, including limiting attendance as necessary:

- Kick off the spring season with Washed Ashore: Art to Save the Sea (May 8–September 26). This focus on sustainability and why it matters will showcase some new initiatives here at the Garden including a reduction in our dependency on plastics and summer camps that will teach kids the importance of sustainability.
- TasteBud will once again be virtual (Tuesday, May 11–Thursday, May 13), but you will be able to visit the Garden for a sneak peek of silent auction items.
- Our new Spring Flower Market is happening on Friday, June 4.
- The weekly Sanimax Concert Series opens with John Kelley & Fusion Express on Thursday, June 17.
- Our 25th Birthday Celebration this fall (Saturday, September 25) will feature a free day for the community culminating in a special concert that night. Watch for more details later this summer.

We're also excited to continue moving forward on the Children's Garden Expansion Project and we plan to start the fundraising campaign this summer/fall. To learn more about the project or ways to leave a lasting legacy by supporting it, contact me at 920.491.3691 ext. 102 or sgarot@gbbg.org.

Finally, we participated in the American Alliance of Museums Assessment Program during 2020 and are now implementing its recommendations. A key understanding of our collections process was a big part of that and has resulted in an update to our collections policy, as well as the creation of a new disaster preparedness plan relating to our plant collections.

Looking forward to seeing you back in the Garden!



Susan Garot
Executive Director

See Tulips, Daffodils, Hyacinths and More Blooming This Spring!

Berry Parfait Hyacinth Blend



Judy Beauty® Tulip Blend



Yellowstone Hyacinth



Spring Loaded® Daffodils



Baseline Tulip Blend

Mark Konlock, Director of Horticulture

Green Bay Botanical Garden has the largest display of spring blooming bulbs in the state—more than 300,000! Last fall, we planted an additional 30,000 bulbs to add to the extravaganza. Visit us in May and share in the experience of being surrounded by spring color with your family and friends!

New this year are plants from the National Garden Bureau's Year Of program. The bulb of the year for 2021 is the hyacinth. We planted Yellowstone hyacinth near our front entrance among the Judy Beauty® tulip blend and Spring Loaded® daffodil blend for your sniffing pleasure. One tip for planting hyacinth is to choose spots near a doorway or along a path where you will be more likely to enjoy their fragrance.

We also added two hyacinth blends, Dutch Delft Pottery and Berry Parfait, among the Bicycle Kick and Baseline tulip blends near the Meredith B. Rose Cottage and Stumpf Belvedere, respectively. Hyacinths contain oxalic acid which makes them critter proof, so we're hoping they also help keep animals away from the tulips. Another hyacinth tip—make sure to cut a few and bring them indoors to perfume your abode. To learn more about hyacinths or the other Year Of plants, visit GBBG.org/NGB-Plants.

Besides the hyacinths, there will be a multitude of new tulips and daffodils including a planting in front of the Schierl Wellhouse that celebrates our 25th Anniversary—the bulbs will grow into the shape of the number 25. Fingers crossed that it works and that our writing is legible! Of course, our collection of over 100 magnolias also blooms around the same time as our spring bulb display, so there will be blossoms in the sky as well as on the ground. Our thousands of spring flowering perennials, shrubs and other trees will be at the party as well. Spring is truly a glorious time to visit your botanical garden!

Blossoms start mid-April, with peak bloom anticipated around mid-May and continuing throughout May into early summer. There are many opportunities to visit throughout the display including Mother's Day (May 9—free admission for moms) and during Go Public Gardens Days (May 10—free admission for all).

Summer Preview

We did something new this year! Our horticulturists weaved three themes into their designs—the Garden's 25th Anniversary by including silver foliated plants, the Washed Ashore exhibit by including blue flowers or undersea evoking plants and, when possible, highlighting Year Of plants named by the National Garden Bureau.

Head to GBBG.org/Blog to get a sneak peak of our designs and make sure to look for these plants during your visits to the Garden this summer!

Garden Happenings

With the wellbeing of our Garden family in mind, all COVID-19 safety requirements are determined based on guidelines from the Wisconsin Department of Health Services and the Brown County Public Health Department. All programs, events and policies are subject to change at any time. Watch for the latest updates via email, Facebook and our website. See calendar for details on dates, times and prices.

Help us "Go Green". You're receiving the printed version of the newsletter because we don't have an active email address on file for your household or you've specifically requested it. For the most current communications from us, including updates on what's in bloom, virtual learning opportunities, gardening tips and more, **please consider updating your email preferences at GBBG.org/Email.**

TasteBud

Online Auction

Tuesday, May 11 at 9 am–Thursday, May 13 at 8 pm

We're going virtual!

With the safety of our guests in mind, we will not be hosting TasteBud at the Garden this year. Help us continue to connect people and plants by participating in our online auction or making a donation.

View and bid on hundreds of items including annual and perennial plants, garden art, landscaping services and more.

Preview auction items in person at the Garden:

Tuesday, May 11–Thursday, May 13 | 9 am–5 pm.

Visit GBBG.org/TasteBud for details and sign up to bid.

Thank You to Our Sponsors

Lead

Stumpf Motor Co
100 Years Strong

In-Kind



Schroeder's
Flowers



STONE SILO PRAIRIE GARDENS
Native Wildflowers and Grasses

Bay Towel

Sponsors as of 3.25.21

Spring Flower Market

Friday, June 4 | 9 am–7 pm

Due to unforeseen circumstances related to the COVID-19 pandemic, many of our plant, flower and landscaping vendors are unable to attend Garden Fair this year.

Instead, the Garden will be hosting a Spring Flower Market that will feature carefully selected plants for sale by our Horticulture Team, tested right here at the Garden! These plants have been selected because they grow well, meaning that you'll have an easier time keeping them healthy in your own landscape. Our Team will also be on hand throughout the day to help you identify the types of plants you need for your living space, and to offer advice on maintaining your plants. Don't know what to plant, how to plant it or where to plant it? Just ask!

Local Garden Clubs will also feature their selected plants and displays of their specialty, and will be available to answer your questions.

Event Admission

Free to Everyone

Garden Admission

Free/Garden Member

1/2 Off Daily Admission/General Public (applies to guests attending the event and includes our summer exhibit Washed Ashore: Art to Save the Sea)

Beverages will be available for purchase.

The Market will be held in the Garden's parking lot. Bring your own cartons, wagons or boxes for carrying items. As you shop, utilize our free service and drop off your purchases in our Plant Pick-Up area. Simply drive up to get your items when you're ready to head home.

Visit GBBG.org/FlowerMarket for details and our COVID-19 Safety Policy.

Getaway Wednesdays

June 9–August 25

Buy One Get One Admission | 9 am–8 pm

See Washed Ashore, enjoy a picnic, play in the Nielsen Children's Garden and more!

Express Garden Tour | 10–11 am

Guided tours of the Garden. Limit 20. Contact us for groups of 10 or more.

Discovery Station | 4–6 pm

Free nature activities.

Thank You to Our Sponsors

Title

Discovery Station



Sponsors as of 3.25.21

Members

Corporate Partner Employee Day Sunday, May 2 & Sunday, August 8

Employees of our Corporate Partner Members are invited to bring their immediate family to enjoy the Garden for free. Present your Corporate ID or business card to our Guest Experience Team upon arrival.

Members-Only Tours

Tuesdays, May 18, July 20, September 28

Go behind the scenes to get an exclusive look at the Garden with our Horticulture Team.

Member Swap Day

Sunday, May 16

Experience other local attractions! Members of the Garden, Neville Public Museum, National Railroad Museum and the Automobile Gallery invite you to visit all attractions for free on Member Swap Day. Remember to present your membership card when you arrive.

Volunteers

Spring is here and we're anticipating several volunteer opportunities in many areas including special events for our summer concert series. There will also be openings for gardening volunteers with the planned return of Weed & Feeds, though they may have a slightly different look.

For all current information, opportunities and sign up, go to GBBG.VolunteerHub.com.

Interested in volunteering at the Garden for the first time? Complete a volunteer application on our website at GBBG.org/Volunteer.

You Continue to Make the Difference!

With the challenges that came with 2020, we are grateful to the volunteers who were able to continue to share their time and we look forward to welcoming back many others in the coming months. 110 individuals donated more than 2,300 hours in 2020 to give visitors a safe, refreshing experience at the Garden. Simply put by a donor to Give BIG Green Bay, "Green Bay Botanical Garden's volunteers are the best!"

In 2020, the following volunteers each shared 25+ hours of their time.

25 to 49 hours:

Julie Arneth
Sue Broeren
Darlene Charneski
Diane Conway
Cathy Jacobs
John Jacobs
Bill Larsen
Judy Nagel
John Oates
Cookie Oryall

Jonie Paye

Barb Perrus
Michael Raymaker
Linda Schulze
Dave Sorenson
Robert Stark
Jim Tubbs
Mary Vandermause
Bill Wangerin
Bob Yashinsky
Carol Zellner

Over 50 hours:

Kathy Amenson
Gene Arendt
Dale Bartel
Dan Brunmeier
Meghan Delie
Sue Ellingson
Lise Gammeltoft
Don Giese
Teresa Hilgenberg Riehl
Dale Hutjens

Scott Jacobe

Ricki Krautkramer
Glenn Landis
Mike Malchow
Casey Paprocki
Mary Silha
Mary Van Dyck
Marcia Ward
Pati Wiegand



WASHED ASHORE.ORG

ART TO SAVE THE SEA Presented by 

May 8–August 31 | 9 am–8 pm
September 1–26 | 9 am–6:30 pm



Stanley the Lake Sturgeon

Linda Gustke, Director of Education & Guest Experience

See and touch eight stunning sea animal sculptures made from trash found in bodies of water while you learn more about the effects of plastic pollution.

With the mission to educate people of all ages on the rise of plastic pollution in our oceans and waterways, Washed Ashore helps spark positive changes in your daily habits connected to water and waste.

The Garden is the first and only venue in Wisconsin to host Washed Ashore, featuring the debut of Stanley the Lake Sturgeon to bridge these important issues to our community. While most of the plastic you'll see is from the Pacific Ocean, plastic pollution is a concern right here in the Great Lakes too.

Plastics have been entering the Great Lakes for a long time, and the main problem is that they don't go away. Upwards of 22 million pounds of plastic are being added to the Great Lakes each year, with more than half of it going right into Lake Michigan.

Some plastic pollution in the Great Lakes is easy to see, like bottles and plastic bags, but the most prevalent type is harder to recognize: Microplastics—tiny pieces of plastic (5 millimeters or smaller) that are broken down from larger plastic items.



Priscilla the Parrot Fish



Gertrude the Penguin

Microplastic facts:

- Humans ingest an estimated 74,000 to 121,000 microplastics by eating, drinking and just breathing each year.
- Plants and animals can also ingest or absorb microplastics.
- Microplastics get absorbed into the air and can fall back to earth in other places with rain and snow.
- More research is needed to determine how microplastics may be harmful to our bodies.

Where do these microplastics come from? We've already mentioned some of the most obvious culprits, but plastic is also in our clothes (unless they are truly 100% cotton), toothbrushes and toothpaste tubes, shoes, fishing equipment and many other products we use every day.

Trash in our landfills and litter from our streets gets washed out to the lakes too. These larger plastic items get broken down on their way to lakes (clothes break down a little every time they are washed) or once they get to lakes

from the movement of water and waves, crashing with rocks, marine life, boats and anything else in the water.

Plastic pollution is an overwhelming issue. Be sure to visit the exhibit this summer, keep an eye on our blogs and Facebook page and look for changes in our event practices to learn about how even small changes can reduce your reliance on plastic and help out our freshwater lakes along the way.

Thank You to Our Sponsors

Presenting



Children & Family Activity Sponsor



Community Partners



Sculpture



Media



Sponsors as of 3.25.21

Become a Conscious Consumer

Inspired by Washed Ashore? So are we! Small acts can have a ripple effect especially when we become conscious consumers.

With a focus on local makers and U.S. artisans, we've curated a wide selection of unique, eco-friendly gifts, home goods and garden art for you to shop. **Peruse the WPS Trellis Gift Shop anytime at GBBG.org/Shop or visit us during Garden hours.**

Grow Your Business through Partnership

Partner with the Garden and connect with a growing audience of more than 156,000 visitors from 49 states and 71 out of 72 counties in Wisconsin through a variety of events, exhibits and educational programs at the Garden. Our Corporate Partners gain exposure to

new audiences, opportunities for client entertainment, and meaningful options for employee engagement, recognition and visibility.

A partnership with the Garden shows your company's commitment to protecting nature, enriching cultural life and inspiring learners of all ages in northeast Wisconsin. It broadens your customer base, builds affinity for your brand and ensures plants always grow our community. Connect with people throughout the region and associate your company's brand with a love of nature, the amazing beauty of the Garden and unforgettable memories made with colleagues, friends and family.

For more information on corporate partnership opportunities, contact Cindy Berton, Director of Development, at 920.491.3691 ext. 104 or cberton@gbbg.org.

Sanimax Concert Series

Garden Members Only until further notice.



© John Oates Photography

Stumpf Motor Co 100 Years Strong Grand Concert Series



© John Oates Photography

Thursdays | June 17 & 24, July 8, 15, 22 & 29, August 5, 12 & 19

Enjoy live music from local musicians in the spectacular Schneider Family Grand Garden. No concert or program on July 1. **Concerts will be for Garden Members only** through advance reservations based on the allotted number of people per their membership level benefit.

Advance Ticket Reservations Required

To make your experience safer and more enjoyable, timed ticket reservations will be required in advance.

Ticket Reservations Open

Garden Angel Members and above:

Monday, May 17 | 9 am

All Garden Members:

Friday, May 21 | 9 am

Tickets

\$5/Garden Member (non-refundable; includes coupon for one beverage in the Concessions Building)

Unable to purchase tickets online?

Call the Garden at 920.490.9457 or visit during regular Garden hours to have tickets emailed to you.

4:30–6 pm | Seeds to Snacks (Drop-In Activity)

Dig into gardening activities and enjoy a fresh garden snack from our harvest each week. Weather permitting.

5–8 pm | Picnic in the Garden

Feel free to bring your own picnic or buy from Not By Bread Alone and La Java.

No beverage carry-ins allowed.

Pre-order a Boxed Dinner

Order from Not By Bread Alone at GBBG.org/SanimaxConcerts or call 920.429.9422 by 12 pm on Tuesday. Pick up your meal at the concert on Thursday night.

6–8 pm | Live music in the Billie Kress Amphitheater

Visit GBBG.org/Concerts for details, including possible General Public admission later in the season and our COVID-19 Safety Policy.

All concerts 7–9 pm

An eclectic variety of talented regional and national musicians will perform live during the Les Stumpf Ford Concert Series in the stunning Schneider Family Grand Garden.

Advance Ticket Reservations Required

To make your experience safer and more enjoyable, timed ticket reservations will be required in advance. Tickets will not be available at the door after 5 pm the night of the concerts.

Ticket Reservations Open

Garden Angel Members and above:

Monday, April 19 | 9 am

All Garden Members:

Monday, April 26 | 9 am

General Public:

Monday, May 3 | 9 am

Tickets

See pricing in calendar.

Service Fees

Garden Members

Online or Walk-in (during Garden hours): \$0

Call-in (during Garden hours): \$5 per order

General Public

Online: \$2 per order

Walk-in or Call-in (during Garden hours): \$5 per order

New This Year! Picnic in the Garden

Feel free to bring your own picnic or buy from a local food vendor.

No beverage carry-ins allowed.

Pre-order a Boxed Dinner

Order from a local vendor at GBBG.org/StumpfConcerts by 12 pm on Wednesday and pick up your meal the night of the concert.

Friday, June 25

Sweet Caroline Tour featuring Jay White

A tribute to Neil Diamond.

Friday, July 16

Simply Billy

A one-of-a-kind tribute experience to Billy Joel.

Saturday, July 24

Yesterday and Today: The Interactive Beatles Experience

An all-request show. Fill out song cards when you arrive and help create the set list!

Friday, August 13

Sounds of Nashville

Third annual event featuring your favorite country songs performed by the songwriters themselves. Featuring all-new songwriters!

Friday, August 27

Jazz Uncorked with Steve March-Tormé

Wine samples and jazz music under the stars.

Friday, September 10

Brews, Bistros & Bonfires

Craft brew samples and music with Heartache Tonight A Tribute to the Eagles. Must be 21 and older to attend.

Visit GBBG.org/Concerts for details and our COVID-19 Safety Policy.

Thank You to Our Sponsors

Title



Investor

Lead



Terri Trantow

Supporting



Patron

Mary and the late Rawson Price

Ansay & Associates



Sponsors as of 3.25.21

Thank You to Our Sponsors

Title



Beverage



Sponsors as of 3.25.21



Buy Online & Save Time

Buying your ticket(s) online saves you time. When you arrive, we'll simply scan your tickets and you'll be safely on your way into the Garden—spending less time waiting with other guests in line.

Tickets can be used for daily admission at any time during regular Garden hours (excluding special events and classes) and are valid for one year from the date of purchase.



May 8–August 31 | 9 am–8 pm
September 1–26 | 9 am–6:30 pm

Included with Garden Admission
Free for Garden Members

See and touch eight larger-than-life sculptures of animals made from trash and debris washed up from bodies of water.

Drop-In Activities

(July 4: 6 pm closure with limited programs)

Free/Garden Member

Garden Admission/General Public unless otherwise noted.

Self-Guided Daily

Available May 1–September 30
(excluding special events)

Scavenger Hunts | Anytime

Hunt for clues and discover plants and animals.

Garden Discovery Boxes | Anytime

Explore boxes placed throughout the Garden with fun activities for kids.

Ask the Expert

Monday–Friday | 9 am–3 pm

Ask our Horticulture Team your gardening questions as you see them working in the Garden.



Face coverings are required in all Garden buildings (ages 2 and up) and during outdoor programs when visitors are gathered in groups.

Tuesday

Children's Story Time

June 15–August 24

10–10:30 am

Nature-themed stories and activities.

Getaway Wednesdays

June 9–August 25

9 am–8 pm

Buy One Get One Admission

Bring your own lunch to enjoy in the Garden. No alcohol carry-ins please.

Express Garden Tour

10–11 am

Guided tours of the Garden. Limit 20, first come, first served. Contact us for groups of 10 or more.

Discovery Station

4–6 pm

Free nature activities.

Summer Camp

Day Camp | Ages 3–5

Budding Buddies | July 7, 14, 21

Specially designed for 3–5 year olds along with their adult buddy, this camp is loaded with nature-themed stories, crafts, hikes and hands-on exploration.

Day Camps | Ages 6–12

Bee Biologist | June 21, 23

Discover the amazing bees that live at the Garden and around the world! Become a bee biologist as you observe bees on flowers, safely encounter our hives and learn why bees are so important to the environment.

Claws, Wings & Scales | August 16, 18

There are more than just plants and insects in the Garden! Trek around to find the creatures that hide in trees, under rocks and swim in the pond.

Weeklong Camp | Ages 6–12

Shipwreck Salvagers | July 26–30, August 2–6

Washed Ashore is making big waves in the Garden, and we need a team of energetic campers to find ways to salvage materials from the wreckage humans leave behind! Chart a course to the Garden and get ready to set sail for fun.

We're thrilled that all of our summer camps are full! Call our Guest Experience Team at 920.490.9457 to be added to the waiting list for a camp.

Calendar

Don't delay! Register right away as classes may fill quickly. We also value our instructors' time, so classes may risk being canceled due to low early enrollment. Thank you!

For your safety and the safety of our instructors and staff, class sizes are limited and physical distancing and other precautions will be taken during all educational programs.



April

Mondays, April 26,
May 3, 10, 17, 24

Hatha Yoga

(R) | 5:30–6:30 pm

Tree Janzen,
Tree's Yoga

Full series:

\$40/Garden Member

\$45/General Public

One Day: \$10

May

May 1–31

Spring Blooms

9 am–8 pm daily

Weather permitting.

Sunday, May 2

Corporate Partner Employee Day

9 am–8 pm

Tuesday, May 4

Guided Meditation

(R) | 5:30–6:30 pm

Ekaterina Bouyear,

Healthy Living Consultant

\$5/Garden Member

\$7/General Public

Friday, May 7–Sunday,
May 16

Go Public Gardens Days

Free admission on Monday,
May 10 | 9 am–8 pm

Sunday, May 9

Mother's Day

9 am–8 pm

Free admission for moms.

Tuesday, May 11–

Thursday, May 13

TasteBud

Online auction.

Visit GBBG.org/TasteBud

for details.

Sunday, May 16

Member Swap Day

(M) | 9 am–8 pm



© Teresa Hilgenberg Riehl

Tuesday, May 18

Members-Only Tour: Green Bay Blossoms

(M/R) | 5–6:30 pm

Mark Konlock,

Director of Horticulture

Free/Garden Member

Tuesday, May 25

Washed Ashore Tour

(R) | 5–6:30 pm

Garden Education Staff

\$5/Garden Member

\$7/General Public

Monday, May 31

Memorial Day

9 am–8 pm

Free admission for military

personnel and veterans.

June

Friday, June 4

Spring Flower Market

9 am–7 pm

Event Admission

Free to Everyone

Garden Admission

Free/Garden Member

1/2 Off Daily Admission/
General Public (applies to

guests attending the event)



Tuesday, June 15

Guided Meditation

(R) | 5:30–6:30 pm

Ekaterina Bouyear,

Healthy Living Consultant

\$5/Garden Member

\$7/General Public

Thursday, June 17

Seeds to Snacks

(M) | 4:30–6 pm



John Kelley & Fusion Express

Orchestra

(Jazz & Broadway tunes)

(M/R) | 6–8 pm

\$5/Garden Member

Sunday, June 20

Father's Day

9 am–8 pm

Free admission for dads.

Thursday, June 24

Seeds to Snacks

(M) | 4:30–6 pm



Salsa Manzanita

(Salsa band of Lawrence

University students, alumni

& professors)

(M/R) | 6–8 pm

\$5/Garden Member

Friday, June 25



Sweet Caroline Tour
featuring Jay White (Neil
Diamond tribute)

7–9 pm

Advance tickets required.

Lawn Seating:

\$25/Garden Member

\$30/General Public

\$10/Child (Ages 3–17 with

one paid adult lawn ticket)

Cowles Terrace Seating:

\$35/Garden Member

\$40/General Public

Child discount not available.

Mondays, June 28, July
5, 12, 19, 26

Hatha Yoga

(R) | 5:30–6:30 pm

Tree Janzen,

Tree's Yoga

Full series:

\$40/Garden Member

\$45/General Public

One Day: \$10

Tuesday, June 29

Photography: Shifting Perspectives

(W/R) | 5–7 pm

Marc Amenson,

Amenson Studio

\$18/Garden Member

\$22/General Public

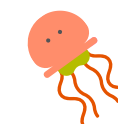
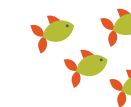
July

Sunday, July 4

9 am–6 pm

Free admission for military
personnel and veterans.

R=Registration Required
W=Workshop
L=Lecture
YF=Youth & Family



Thursday, July 8
Seeds to Snacks
 (M) | 4:30–6 pm



Kevin Van Ess & Talk
 of the Town
 (Swing/Dixieland style Jazz)
 (M/R) | 6–8 pm
 \$5/Garden Member



Monday, July 12
The World of the Honeybee & Their Important Role in Pollination
 (W/R) | 4–7 pm
 Brown County Beekeepers Association
 \$9/Garden Member
 \$12/General Public

Thursday, July 15
Seeds to Snacks
 (M) | 4:30–6 pm



Valerie B. & the Boys
 (Contemporary R&B, Soul & Funk)
 (M/R) | 6–8 pm
 \$5/Garden Member

Friday, July 16



Simply Billy
 (Billy Joel tribute)
 7–9 pm
Advance tickets required.
Lawn Seating:
 \$20/Garden Member
 \$25/General Public
 \$10/Child (Ages 3–17 with one paid adult lawn ticket)
Cowles Terrace Seating:
 \$30/Garden Member
 \$35/General Public
 Child discount not available.

Tuesday, July 20
Members–Only Tour: Through the Garden Gate
 (M/R) | 5–6:30 pm
 Lindsay Hendricks,
 Horticulture Manager
 Free/Garden Member

Thursday, July 22
Seeds to Snacks
 (M) | 4:30–6 pm



Chicken Wire Empire
 (Bluegrass)
 (M/R) | 6–8 pm
 \$5/Garden Member

Saturday, July 24



Yesterday & Today:
 The Interactive Beatles Experience
 7–9 pm
Advance tickets required.
Lawn Seating:
 \$25/Garden Member
 \$30/General Public
 \$10/Child (Ages 3–17 with one paid adult lawn ticket)
Cowles Terrace Seating:
 \$35/Garden Member
 \$40/General Public
 Child discount not available.

Thursday, July 29
Seeds to Snacks
 (M) | 4:30–6 pm



Erin Krebs Quintet (Jazz)
 (M/R) | 6–8 pm
 \$5/Garden Member

August
 Thursday, August 5
Seeds to Snacks
 (M) | 4:30–6 pm



Tae
 (R&B, Soul & Rock)
 (M/R) | 6–8 pm
 \$5/Garden Member

Sunday, August 8
Corporate Partner Employee Day
 9 am–8 pm

Wednesday, August 11
Tour Tsyunhekw^, an Indigenous Oneida Nation Farm
 (R) | 5–8 pm

Kyle Wisneski,
 Tsyunhekw^ Agriculture
 \$5/Garden Member
 \$7/General Public

Thursday, August 12
Seeds to Snacks
 (M) | 4:30–6 pm



F.B.I. & the
 Untouchable Horns
 (Mix of Soul, Jazz, R&B & Pop)
 (M/R) | 6–8 pm
 \$5/Garden Member

Friday, August 13



Sounds of Nashville
 7–9 pm
Advance tickets required.
Lawn Seating:
 \$30/Garden Member
 \$35/General Public
 \$10/Child (Ages 3–17 with one paid adult lawn ticket)
Cowles Terrace Seating:
 \$40/Garden Member
 \$45/General Public
 Child discount not available.

Thursday, August 19
Seeds to Snacks
 (M) | 4:30–6 pm



Copper Box
 (Roots/Americana)
 (M/R) | 6–8 pm
 \$5/Garden Member

Wednesday, August 25
Holistic Stress Relief

(W/R) | 6–8 pm
 Jackie Johnson,
 Northeast WI Unit of the
 Herb Society of America
 \$18/Garden Member
 \$22/General Public

Friday, August 27



Jazz Uncorked with Steve
 March–Tormé
 7–9 pm
Advance tickets required.
Lawn Seating:
 \$25/Garden Member
 \$30/General Public
 \$10/Child (Ages 3–17 with one paid adult lawn ticket)
Cowles Terrace Seating:
 \$35/Garden Member
 \$40/General Public
 Child discount not available.

Save the Dates



Friday, September 10



Brews, Bistros & Bonfires featuring
 Heartache Tonight A Tribute to
 the Eagles
 7–9 pm
Advance tickets required.
Lawn Seating:
 \$25/Garden Member
 \$30/General Public
Cowles Terrace Seating:
 \$35/Garden Member
 \$40/General Public
 Must be 21 or older.

Wednesday, September 15



5–8 pm
 \$150/Person
Limited seating, reservations required.
Registration Begins:
 Garden Angel and above
 memberships: July 5–11
 All Garden Memberships: July 12–18
 Open to the General Public: July 19–
 until full

Thank You to Our Sponsor



Saturday, September 25



Free Admission & Family Fun
 9 am–4 pm
 Timed reservations required.
After Hours Party featuring Ants Marching–Dave Matthews Tribute Band
 6–9 pm
 Must be 21 or older.
 Advance tickets required.

How to Register

Registration is required for all classes and programs except where noted. Register online at GBBG.org or by phone at 920.490.9457. To hold your space, payment is due with registration.

After You Register

We will contact you the week of the class to confirm your enrollment. Please dress according to the weather for all outdoor programs. No rain dates are planned.

Cancellations & Refunds

Classes canceled due to COVID–19, low enrollment or hazardous weather are refunded automatically. You will be notified by phone about class cancellations. In cases of inclement weather, call 920.490.9457 to check the status of the class. If you must cancel your registration, your fees will be refunded if notice is received at least five days prior to the class. Green Bay Botanical Garden cannot refund fees requested on or after the start date of a class or for sessions missed due to student illness or other personal situations.

Fan Photos

It's time for a throwback! Here are some of our favorite shots from the early years at the Garden. Remember to post your photos of the Garden on social media with [#mygbgarden](https://www.instagram.com/mygbgarden) or tag us as your location and they may end up in our next newsletter!



The Partnership That Grew the Garden



Rachel Mueller, Marketing & Communications Coordinator

Today, Green Bay Botanical Garden spans 47 acres full of natural Wisconsin scenes and features more than 60,000 breathtaking plants and flowers.

25 years ago, it was an undeveloped area with limitless potential. Nearly 25 years before that, it was an idea in the minds of a few passionate plant people. Here's how almost 50 years of hard work, determination and a special partnership got us to where we are today...

Gathering Garden Enthusiasts

The idea for a community garden took root early on with help from Green Bay Press-Gazette journalist, Ray Pagel, and Brown County Extension agent, Ernie Ehrbar. They formed the Gardeners Club of Green Bay (part of the national Men's Garden Clubs of America), which promoted interest in horticulture, home landscaping and community gardening. This group regularly talked about the need for a public arboretum or botanical garden to boost Green Bay's already culturally rich reputation.

Out of this club, Robert (Bob) Mongin, Green Bay's first landscape architect, and Paul Hartman, a Brown County Extension Horticultural Agent, joined in on the dream of a botanical garden. Hartman worked with Tim Lang (city forester) to create a subcommittee from the club, Plants in the Urban Environment (PUE), to further explore the concept. The committee also included several people and founders who would be crucial to the creation of the Garden: Jerry Landwehr (first Horticulture Director), Glenn Spevacek (first Executive Director), Lee Hansen, Gail Fischer, Jim Beard, Roger Murphy, Dave Parsons and Sister Nivard Schaefer.

These committee members devoted much of their free time during the summer of 1978 to research the process of creating a botanical garden, including visiting other locations in Wisconsin and beyond to get more in-depth behind-the-scenes knowledge.

Their next step? Finding a spot that would give a botanical garden room to grow.

Finding the Soil

After visiting more than 30 potential sites in the greater Green Bay area, three options presented themselves, but there was only one location that would work best for a botanical garden:

A portion of land owned by Northeast Wisconsin Technical Institute (NWTI) (now known as Northeast Wisconsin Technical College).

"We fell in love with the site when we saw it, because of the rolling hills, the old apple trees and its character," Landwehr said.

The 90-acre area was part of the original 191 acres the college bought in 1969, which included the entirety of the old Larsen Orchard.

It seemed as if everything was falling into place. With support from NWTI Dean Allen Ellingson, NWTI President Gerald Prindiville and Associate Dean of Agriculture Don Jaworski, the PUE group, now known as the Botanical Garden subcommittee, presented to the NWTI Board of Trustees in early 1980. They showcased the benefits of a botanical garden for the college, the Green Bay community and beyond and why hiring Francis Devos of the Minnesota Landscape Arboretum and Geoffrey Rausch of EPD Consultants (designer of Chicago Botanic Garden) would be the right move.

The board didn't agree and tabled any decisions on the proposal, citing apprehension in letting outside groups develop the Garden.

1977
PUE group meets with NWTI (currently Northeast Wisconsin Technical College, NWTI). PUE explores three potential sites for the Garden including 90 acres on NWTI land.

1978
Paul Hartman forms Plants in the Urban Environment (PUE).

1979
PUE group meets with NWTI (currently Northeast Wisconsin Technical College, NWTI). PUE explores three potential sites for the Garden including 90 acres on NWTI land.

1982
GBBG, Inc. incorporates.

1983
Board of Directors appointed.

1984
First annual meeting. Tax-exempt status granted.

1986
Garden reconfirms NWTI site as top choice. First Garden Fair held at Chicago and North Western Depot. Board establishes first office and hires executive secretary.

1988
NWTI (NWTI) signs two-year lease.

1989
Gail Fischer successfully coordinates \$25,000 fund drive.

1991
Garden Fair moves to Larsen Road site.

1991
Board hires Buettner & Associates to develop first phase of Master Plan, and Martison Architects to develop Visitor Center.

1992
NWTI agrees to a 99-year lease for 30 acres contingent on successful campaign of \$1.4 million.

1993
Spevacek hired as Executive Director. Capital campaign exceeds goal.

1994
Board hires Buettner & Associates to develop first phase of Master Plan, and Martison Architects to develop Visitor Center.

1995
Visitor Center constructed.

1995
Stumpf Belvedere, Schierl Wellhouse and Gertrude B. Nielsen Children's Garden constructed. Jerry Landwehr creates first Garden of Lights.

1996
Donor Gate & Mabel Thome Fountain are completed. Garden opens to the public.

1997
Stumpf Belvedere, Schierl Wellhouse and Gertrude B. Nielsen Children's Garden constructed. Jerry Landwehr creates first Garden of Lights.

1998
Betty Rose Meyer Bridge, Cora Vanderperren Cottage Garden & Meredith Rose Cottage constructed.

Planting the Seed for Partnership



"We had a plan and some ideas, but the group was not ready. We had no memberships, no official status and no community backing," said Hartman.

While the subcommittee continued to meet, it would be a few years until they revisited their project. In 1982, Spevacek came back to the group with a plan to renew their passion in building a botanical garden for the community. With his leadership, the group incorporated into Green Bay Botanical Garden, Inc. and eventually obtained nonprofit status in 1984. They also formed their first board with Spevacek, Hartman and David Parsons as officers, accompanied by directors: Mongin, Hansen, Lawrence Krause, Lynn Kirkpatrick, Mike Hassler, Teri Wall, Polly O'Brien, Nan Schmechel and Gene Eisch.

Hartman reconvened their group to review all the potential sites for a garden and in May 1986, the Garden's Board agreed that the 90-acre NWTI site was still the ideal choice.

This time, it did fall into place. The college's Board approved a lease agreement for 60 acres at one dollar a year but still had one caveat: NWTI would only renew the lease if the development plan was successfully funded. The Garden's Board thought a long-term lease was needed to ensure a permanent home for the Garden.

Over the next four years, negotiations continued. Thanks to support of NWTI President Prindiville and faculty members like Jaworski, the college officially agreed to a 99-year lease for 30 of the 60 acres in May 1992 once the Garden raised \$1.4 million in its capital campaign. In 2000, the lease was updated giving the Garden a total of 47 acres with the remaining 13 to be kept by the college for its landscape horticulture program.

Seeing the Seed Sprout & Grow

Since the Garden opened in 1996, the partnership with NWTI has only flourished.

In 2000, NWTI created a Landscape Horticulture Program, which was originally a two-year certificate program that became a fully accredited Associate program. Today, students interested in Horticulture can enroll in programs related to the green industry

including Landscape Installation, Landscape Technician, Sustainable Agriculture or Plant Healthcare Management.



Students in these programs can also use the Garden as a resource for their studies, including courses taken in the Landscape Horticulture Learning Center (built in 2006) and hands-on experience in the greenhouses they share with our Horticulture Team or skill-building with our Garden Team through a variety of intern roles throughout the year.

"The center gives our students and staff the unique opportunity for hands-on learning on a 47-acre ornamental lab with display gardens and natural areas" says Amy Kox, Dean of Trades & Engineering Technologies at NWTI.

The college's Landscape Technician Technical Diploma is the only Wisconsin program hosted by an accredited institution that's located on a botanical garden site.

"This partnership allows our students to experience hundreds of different types of plants and landscaping techniques," she says. "We are so grateful to be able to have the Garden for our students and staff to learn and enjoy."

Current Executive Director, Susan Garot, emphasizes the importance of this partnership for the community's benefit.

"Looking back on our history, it's clear we're still here in no small part due to our willing partner, Northeast Wisconsin Technical College," she says. "The last 25 years have shown that we can do a lot of good together, whether it's for the community at large, the college students who build skills from first-hand field experience or simply connecting people with plants all year long."

Historical details and quotes from "A Place for Everyone: The History of Green Bay Botanical Garden" (Lee Somerville) have been referenced in this article. [To learn more about the Garden's rich history, visit the WPS Trellis Gift Shop to purchase a copy.](#)

1999 Mary Hendrickson Johnson Wisconsin Woodland Garden, Kaftan Lusthaus, Lux Rose Garden, Kress Oval Garden constructed.

2000 NWTI creates Landscape Horticulture Program. NWTI agrees to lease additional 17 acres to the Garden. Summer concerts begin. Volunteer Center is constructed.

2001 NWTI builds first greenhouse on site. Van Den Wymelenberg Color & Foliage, Wood Memorial Grove & Green & Gold Hosta Society Display Gardens open.

2002 Stumpf Hobbit House opens. Mabel Thome Patio is added to the West side of Schneider Education Center.

2003 Simurdiak Patio & Wos Garden open on the East side of Schneider Education Center.

2004 Garden implements plant identification system.

2005 Bay Area Daylily (BAD) Buds plant a display garden. Children's Gardening Patch is relocated. Dennis Ledvina, Magnolia expert and avid volunteer, contributes dozens of trees to establish Magnolia Grove.

2006 NWTI breaks ground for the Landscape Horticulture Learning Center.

2007 Garden is named an All-America Selections Display Garden.

2010 "Growing the Garden" Capital & Endowment Campaign raises \$3.6 million to build Donald & Patricia Schneider Education Center. Jenquine Pavilion & Overlook Garden and King Shade Garden are established.

2011 Baer Perennial Garden opens. Renovated Fischer Visitor Center and Schneider Education Center are both dedicated.

2012 Stumpf Hobbit House opens. Mabel Thome Patio is added to the West side of Schneider Education Center.

2013 Simurdiak Patio & Wos Garden open on the East side of Schneider Education Center.

2014 Arendt Conifer Garden is dedicated. Garden Fair celebrates its 30th year. Smith Group/JJR begins design of the Grand Garden.

2016-17 Perennial Performance Capital Campaign raises \$6.5 million and construction on the Schneider Family Grand Garden begins.

2018 Schneider Family Grand Garden opens & the first nationally-touring exhibit, Nature Connects®: Art with LEGO® Bricks arrives. Magnolia Collection recognized as a Magnolia Multisite Collection™, the only Plant Collections Network (PCN) collection in the state of Wisconsin.

2019 Garden hosts first homegrown summer exhibit, Butterflies & Blooms, with a focus on native butterflies.

2021 Garden celebrates 25 years since grand opening and hosts second traveling exhibit, Washed Ashore: Art to Save the Sea.

2021-2023 Funds raised for Expanded Children's Garden. Construction takes place & Children's Garden officially reopens to the public.

Growing Green Thumbs Through the Years



Rachel Mueller, Marketing & Communications Coordinator

Educating those who cross paths with the Garden and connecting them with plants has been a crucial part of our mission even before the Garden opened in 1996.

When the founders were hard at work building up awareness of the Garden, fundraising for initial construction costs and negotiating lease agreements with NWTC, they were also ensuring the community could learn about plants, nature and gardening too.

Spevacek helped develop a Garden Symposium in the mid-to-late 1980s that brought in a number of nationally known gardening experts like Kurt Bluemel, the "King of Grasses." Garden Fair began around this time as well with the first fair held at the old Chicago & North Western Railroad depot in downtown Green Bay (now near the home of Tittletown Brewing Co.). Developed by Garden board member Polly O'Brien, it was incredibly popular and gave the community a chance to not only buy plants but

also learn about them from local professionals, nurseries and clubs. The Fair eventually moved to the Garden site on Larsen Road in 1992.

The Garden also coordinated day trips to other gardens in the region and longer trips to places across North America including Missouri Botanical Garden, Royal Botanic Garden in Hamilton, Ontario and more. Local garden walks to both private and public gardens were also popular, giving people the chance to see plants that were grown in the community. Mongin conducted the first walks, including a tour through perennial gardens he planted at Joannes and Astor parks in Green Bay. In 2013, the walks were discontinued, and the Garden now acts as a one-stop location to introduce visitors to home gardening and native plants.

By the Garden's opening in 1996, staff established a children's planting area ("A Garden of Our Own")

which was a hot spot for kids. Barbara Heike was the Garden's first children's educator from 1997–2001, and she oversaw activities connected to the Nielsen Children's Garden—many programs she created continue in some form today. She also coordinated a weekly Children's Gardening Program where participants planted and maintained a small garden plot, grew flowers and vegetables and learned about nature.

"No matter how many times I walked through the Garden, there is always something new to discover," says Kelle Hartman, Children & Family Educator from 2006–2020. "A new plant, a seed I've never seen before that I had to find out what it was, a question from a student that I couldn't answer and became my newest research project."

Over the years, the Education Team and its dedicated volunteers have expanded its offerings to include a wide variety of ages and interests to suit the changing needs of the community. They coordinate curriculum-based field trips for schools, partner with instructors to teach

classes, offer nature-inspired summer camps and so much more. The Garden also boosts learning in nature through its paid internship programs, giving students opportunities to build skills in a variety of fields from horticulture to marketing and events.

Last year, the Garden even increased its virtual impact, reaching many in the community who were unable to be at the Garden physically during the pandemic. Both the Education and Horticulture Teams highlighted gardening tips and tricks, the science behind plants and iconic scenes in nature.

"Education is at the core of what we do here at the Garden," says Linda Gustke, Director of Education & Guest Experience. "Whether we're teaching kids about the importance of pollinators or a new gardener is taking a virtual class about seed starting, we're here to connect people with plants in whatever way possible."

To learn more about educational opportunities at the Garden, visit GBBG.org.



Board of Directors

Executive Director
Susan Garot

Nobert Hill
Todd Kane
Pat Koleske

Officers
Diane Conway, Chair
Terri Trantow, Vice Chair
Rob Servais, D.C., Secretary
Bill Wangerin, Treasurer
Judy Nagel, Past Chair

Ron Melchert
Laura Nelson, M.D.
Murphy O'Hearn
Jonie Paye
Nicole Polarek
Mike Raymaker
José Villa

Directors
Tom Arndt
Cheri Galecke
Lise Gammeltoft
LoisGrace Golde
Kathy Hartman

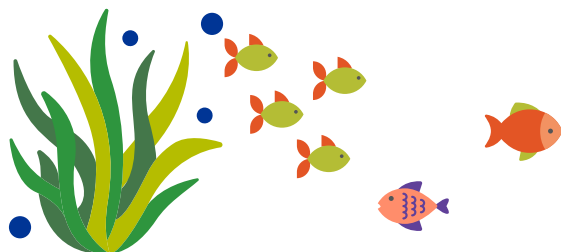
Advisors
Lee C. Hansen
Robert J. Janssen
Michael Salvo
Jack Swelstad, M.D.



2600 Larsen Rd | Green Bay, WI 54303

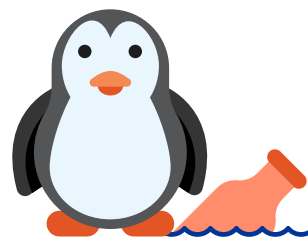
NON PROFIT ORG
US POSTAGE
PAID
GREEN BAY WI
PERMIT NO. 165

We connect people with plants by providing year-round educational and recreational experiences for everyone in an environment that engages, inspires and refreshes.



What's Inside




See Tulips, Daffodils, Hyacinths and More
Making Waves: New Exhibit Arrives May 8
The Partnership That Grew the Garden
and More!



Upcoming Events

Washed Ashore: Art to Save the Sea
TasteBud
Spring Flower Market
BMO Harris Bank Getaway Wednesdays
Sanimax Concert Series
Les Stumpf Ford Grand Concert Series

For the latest on what's happening at the Garden, sign up for our weekly e-newsletter and follow us on:

 GreenBayBotanicalGarden
 @GBBotanicalGarden
 @GBBotGarden

Visit GBBG.org for details on our upcoming events, classes, activities, volunteering, membership and more.