

SUMMER 2018

GREEN BAY

# BOTANICAL GARDEN

Green Bay Botanical Garden is a 100% community supported non-profit that connects people with plants in an environment that engages, inspires and refreshes.

*Engage. Inspire. Refresh.*

**Start your  
Summer  
Adventure  
at the Garden!**

Relax & Refresh at Events  
Discover Classes & Programs  
Enjoy thousands of  
Breathtaking Blooms  
and More!



*From the debut of a blockbuster exhibit to a fantastic lineup of entertainment in the Billie Kress Amphitheater, this summer at the Garden is not to be missed.*

# A Sensational Summer Awaits You

© Kathleen Caylor Photography

**Susan Garot, Executive Director**

Thanks to you, the summer of 2018 will cap a milestone year for Green Bay Botanical Garden. We are anticipating record-breaking crowds for our first ever, internationally touring exhibit, Nature Connects®, which opens May 25 and runs through August 19. Members will get a sneak peek on May 24 from noon to 4 pm. We will be closed to the public the whole day so we can put the final touches on the exhibit.

While we are also preparing for this exhibit, we are looking ahead to the kickoff concert of our Schneider Family Grand Concert Series. Vic Ferrari Symphony on the Rocks will open the season on Saturday, June 2. Following that will be Opera in the Garden featuring The Florentine Opera on June 10; Pops Concert featuring the Civic Symphony of Green Bay on July 1; Sounds of Nashville on August 3; Grass Roots Festival in partnership with Mile of Music on August 26; and Brews, Bistros & Bonfires on September 21.

With all that is going on, we wanted to remind everyone that Garden Fair, held the weekend following Memorial Day, is on hiatus this year. In being mindful of the time, effort and resources associated with Nature Connects, it was with great consideration that our Board decided to take a break from Garden Fair in 2018. In an effort to put our best foot forward as we welcome thousands of visitors to experience our first exhibition, we would also take time and resources away from Garden Fair, hindering its success. We encourage you to support the local landscapers, horticultural and garden centers that have participated in Garden Fair. Visit our website at [GBBG.org/GardenFair](http://GBBG.org/GardenFair) for a listing of these vendors and their contact information.

“Awareness”, “innovation”, “people” and “community” are the four lenses through which the Garden filters its planning and decision-making. I hope you agree we have some innovative plans this summer. We are building onto our strong professional and volunteer staff. We are partnering with a number of new community organizations to bring a higher level of quality programming to the Garden. Finally, through awareness, we hope to see record-breaking crowds finding their way to the Garden. Many of our events are free or offer reduced admission to all in our community. And of course, members are always free or receive reduced pricing. Now is a great time to join!

# You Change Lives

**When You Leave Your Legacy with Plants & People**



© John Oates Photography

**Kathy & Doug Hartman, Garden members since 1995**

## What is YOUR Legacy?

We’ve asked ourselves this same question – what do we want our legacy to be? Like most people, we want to provide for our family. But what about the other passions that are a part of our life? We’ve worked to help Green Bay Botanical Garden grow, along with many other dedicated people. We want it to be around and thriving for generations to come, and we realized that the amazing beauty and adventure people find in the Garden can be a part of our legacy.

## How can you ensure the joy you find in the Garden lasts more than your lifetime?

We put our plans for this legacy in place by joining the **Garden’s Perennial Legacy Society!**

We learned that it doesn’t require abundant resources to show we care for the Garden, and a legacy gift doesn’t need to impact our financial situation today. We can provide for our family and also be a part of the Garden’s story for years to come. We believe it’s really the best of the present and the future.

The **Perennial Legacy Society** was established to recognize YOU and other generous, visionary supporters who have included the Garden in their estate plans. We were surprised to learn about the many ways to make a lasting gift and, even more so, the advantages of giving. We never realized before how easy it would be for us to participate. And we feel that we are in very good company with like-minded supporters of the Garden.

If you’re interested in exploring how you can become a member, let Cindy know. She can help you find the best way to support the Garden in a way that is meaningful to YOU.

If you would like to talk about planning a legacy gift, or if you have already included the Garden as a beneficiary in your estate planning, please share this information with the Garden so they can celebrate your gift in your lifetime.

**Contact Cindy Berton, Director of Development, at 920.491.3691 ext. 104 or [cberton@gbbg.org](mailto:cberton@gbbg.org)**

Visit [www.GBBG.org/NatureConnects](http://www.GBBG.org/NatureConnects)  
for exhibit details



at GREEN BAY BOTANICAL GARDEN  
presented by Nicolet  
NATIONAL BANK

## Nature Connects®: Art with LEGO® Bricks by artist Sean Kenney debuts at the Garden May 25 – August 19

Stimulate your imagination and delight in the union of art, nature, play and design with this larger than life exhibit. Nature-inspired sculptures crafted entirely of LEGO bricks will connect families in a whole new way. As you view the sculptures, take a look at their surroundings. Each is positioned in an area around the Garden that best represents their natural environment.

### Thank You to our Sponsors:



### During Your Visit

#### LEGO Block Build Area

Check out the LEGO Block Build Area in the lower level of the Fischer Visitor Center. Discover a new build challenge each week.

#### Get Social & Be a Part of the Action

Bring your LEGO minifigure to share its adventure in the Garden and feel like a real action figure as you check out our giant building blocks built by Vande Hey Company, Inc. in the Nielsen Children's Garden. Capture a picture and share with friends using #NatureConnectsGB.

#### Snap & Share Stations

These platforms are ready to hold a mobile device, allowing you to snap a group photo in front of a giant building block, unique flower frames or the backdrop of the Garden. The flower frames are filled with All-America Selections winners, varieties that were tested for the flower market in the Garden! Share your picture using #AASWinner and #NatureConnectsGB.

#### Bring Nature Connects Home

Find many items in the WPS Trellis Gift Shop as a reminder of this amazing event. We have small replicas of select sculptures, Nature Connects figurines, mini puzzles, pens, stickers, markers and books!

#### Grow Your Business through Sponsorship

Connect with people throughout the region and associate your brand with the love of nature, the amazing beauty of the Garden and unforgettable memories made with loved ones.



# SUMMER BLOCK PARTY

## Connect with Programs & Activities

Beyond visiting the sculptures, our regular summer family programming, including Tuesday Story Times, Wednesday Discovery Stations and monthly Family Nature Nights, will highlight the plants and animals displayed by the sculptures, as well as these featured events:

### Tuesdays & Fridays, June 12–August 17 Monthly Nature Connects Segway Tours

Coast on two wheels during a tour of Nature Connects sculptures while learning about the Garden.

### June 18

#### Community Connection:

#### Green Bay Children's Museum Art Lab with LEGO Bricks

From bumpy drawings to spin art, create your own artistic masterpiece with the assistance of LEGO bricks.

### June 24

#### Build-tanical Challenge Showcase

View the finalists' sculptures from local artists and students. Vote for your favorite sculpture, enjoy a Garden cookout (available for purchase) and then build your own creation in the LEGO Block Build Area.

### June 25

#### Robotics with LEGO Mindstorms®

Become a robotics wizard! Program your bot to navigate a garden map.

### July 9

#### Community Connection: Barnes & Noble Build Event

Complete build challenges with the option of purchasing a \$4 LEGO minifigure mystery bag.

### July 20

#### LEGO Minifigures Movies

Bring your favorite LEGO minifigures and other creations. Create a stop motion movie of their Garden adventures!

### August 13

#### Community Connection: NEW Zoo Zoomobile

Meet the live versions of some of our Nature Connects sculptures with animals from the Zoo.

### August 17

#### Nature Connects Block Party featuring *The LEGO Movie*

Celebrate the end of summer and Nature Connects by kicking back in the Schneider Family Grand Garden lawn and enjoying *The LEGO Movie*, building block activities, yard games, Garden cookout and more!

Contact Cindy Berton, Director of Development,  
at 920.491.3691 ext. 104 or [cberton@gbbg.org](mailto:cberton@gbbg.org)

# SUMMER HAPPENINGS



© John Oates Photography

## Schneider Family GRAND CONCERT Series

## Sanimax Reclaim · Renew · Return CONCERT Series

An eclectic variety of talented regional and national musicians will grace the Billie Kress Amphitheater surrounded by stunning views of the new Schneider Family Grand Garden.


### Vic Ferrari Symphony on the Rocks | Saturday, June 2

Presented by: 

This high-powered 26-piece rock symphony will feature the biggest hits of classic rock and pop. A variety of food and beverage options will be available for purchase. No carry-ins allowed.

Event details and tickets at [GBBG.org/Rocks](http://GBBG.org/Rocks)

### Opera at the Garden featuring The Florentine Opera | Sunday, June 10

Presented in partnership with: 

Enjoy a variety of popular and Broadway opera songs by The Florentine Opera featuring the Summer Concert Residency Artists. Feel free to bring in your own picnic. The Garden will feature a cookout with beverage stations. No alcohol carry-ins allowed.

Event details and tickets at [GBBG.org/Opera](http://GBBG.org/Opera)

### Pops Concert featuring Civic Symphony of Green Bay | Sunday, July 1

Presented by: 

Celebrate the 4th of July with the Civic Symphony of Green Bay. Feel free to bring in your own picnic. The Garden will feature a cookout with beverage stations. No alcohol carry-ins allowed.

Event details and tickets at [GBBG.org/Pops](http://GBBG.org/Pops)

### Sounds of Nashville | Friday, August 3

Listen to your favorite Country songs performed acoustically by the songwriters as they share the story behind the lyrics. A variety of food and beverage options will be available for purchase. No carry-ins allowed.

Event details and tickets at [GBBG.org/Nashville](http://GBBG.org/Nashville)

### Grass Roots Festival | Sunday, August 26

Presented in partnership with Mile of Music

Enjoy an array of bluegrass, roots, Americana and folk music. A variety of food from Stone Arch Brewpub and beverage options will be available for purchase. No carry-ins allowed.

Event details and tickets at [GBBG.org/GrassRoots](http://GBBG.org/GrassRoots)

**Thursdays: June 21 & 28, July 12, 19 & 26, August 2, 9 & 16**  
Surrounded by the spectacular views of the new Schneider Family Grand Garden, music lovers across all genres and generations will enjoy live music from local musicians in the Billie Kress Amphitheater. *No concert on July 5.*

#### 4-6 pm

##### Seeds to Snacks

Dig into hands-on gardening activities and investigations, then create a fresh garden snack to enjoy from our harvest each week. Weather permitting. No program July 5.

#### 5-7:30 pm

Feel free to bring in your own picnic. No alcohol carry-ins allowed. The Garden will feature a small concessions area with snacks and beverages. Bar stations will offer local brews and botanically inspired cocktails. A variety of sandwiches, snacks and desserts will be available for purchase from Not By Bread Alone. La Java will be serving coffee, lattes, fresh lemonade and iced tea.

#### 6-7:30 pm

Live music in the Billie Kress Amphitheater.

#### Thank You to our Sponsors:



For details on Concerts in the Grand Garden, visit [GBBG.org/Concerts](http://GBBG.org/Concerts)

BMO Harris Bank  
**GETAWAY  
WEDNESDAYS**



June 6–August 29

© CL33 Photography

**Wednesday Cookouts | 11 am–1 pm**

Refresh midday by spending your lunch break surrounded by the beauty of nature! Select produce is grown at the Garden in partnership with the N.E.W. Master Gardener Volunteer Association.

**Buy One Get One Admission | 4–8 pm**

Explore Nature Connects, enjoy a picnic, play in the Nielsen Children's Garden, check out a S.E.E.D. Pack and even search for Pokémon!

**Children's Discovery Station | 4–6 pm**

Come to the Nielsen Children's Garden and enjoy fun, hands-on activities. Learn more about the animals highlighted by the Nature Connects sculptures.

**Garden to Glass: Cocktails with Tunes | 6–7:30 pm**

Enjoy specialty cocktails, beer, wine and live music. Fresh ingredients from the Garden will give your craft cocktail experience a scent and taste to remember. No alcohol carry-ins allowed.

**Thank You to our Sponsors:**

Children's Discovery Station  
Sponsor

Title Sponsor



**Fall Trip: Autumn Gardens of the Midwest**

Join us as we tour the Autumn Gardens of the Midwest this September 14–17, 2018.

We'll travel by motor coach to St. Louis, with stops along the way in Rockford, IL to see the Anderson Japanese Gardens and the Nicholas Conservatory and Gardens, staying overnight in Springfield, IL. In St. Louis we will visit the iconic Arch and Museum, tour the City Garden, the Butterfly House and spend a day at the oldest botanical garden in the United States – Missouri Botanical Garden. Our return trip will include a stop at Janesville's Rotary Garden.

*Seats are limited. Be sure to register by May 20.*

Visit [GBBG.org/AutumnTrip](http://GBBG.org/AutumnTrip) for details and photos of some of the fun stops

**Save the Date: Spring Trip to England**

Next Spring, join us for a trip to England and the Chelsea Flower Show! We'll leave Green Bay May 17 and return on May 26, 2019.

Key stops include Windsor Castle, Hidcote Manor, Sissinghurst, Leeds and Dover Castles, plus much more.

*Details coming by July 1.*

Visit [GBBG.org/SpringTrip](http://GBBG.org/SpringTrip) for a sneak peek of some of the sites

© John Oates Photography



**Volunteers**

**Weed & Feeds**

Help us keep the Garden looking its best as we welcome thousands of visitors! Work side-by-side with staff as they guide you through the tasks for the evening and then enjoy a delicious meal provided by the Garden.

To RSVP for Weed & Feeds, contact us at 920.491.3691 ext. 105 or [volunteers@gbbg.org](mailto:volunteers@gbbg.org)

**Opportunities to Give Back**

We need you! Volunteers are the heart and soul of the Garden. Without volunteers, we wouldn't have our successful special events or the beautiful landscape we enjoy daily.

Areas of opportunity:

- Nature Connects
- Gardening
- Special Events
- Educational Programs
- Facility Maintenance
- Guest Services

It is easy to get started!

Complete a volunteer application on our website at [www.GBBG.org/Volunteer](http://www.GBBG.org/Volunteer)

**Family & Adult Education**

**Family Programs**

Hands-on family workshops, nature hikes, Garden Sprouts Preschool Program, story times and more.

**Summer Day Camps**

For ages 6–16, participate in daylong camps or weeklong/half day camps! Camps include games, activities, crafts, songs and more related to the theme.

**Adult Programs**

Lectures, tours and workshops related to gardening, cooking, crafting and more.



# Summer Calendar

Don't delay! Register right away as classes may fill quickly. We also value our instructors'

## SUMMER BLOCK PARTY

May 25 - August 19

Daily | 9 am-8 pm  
Free/GBBG Member;  
Garden Admission/  
Non-Member

NATURE CONNECTS  
ART WITH LEGO® BRICKS  
at GREEN BAY BOTANICAL GARDEN  
presented by Nicolet  
NATIONAL PARK



Art by  
Sean Kenney

Discover 16 larger-than-life sculptures made from half-a-million LEGO blocks!



### Tuesday

#### Children's Story Time

Jun 12-Aug 28  
10-10:30 am

Free/GBBG Member;  
Garden Admission/  
Non-Member

### Wednesday

#### BMO Harris Bank Getaway

Wednesdays:  
Jun 6-Aug 29

#### Cookouts

11 am-1 pm  
\$6/GBBG Member  
\$7/Non-Member  
(plus admission)

**Buy One Get One  
Admission**  
4-8 pm

**Discovery Station**  
4-6 pm  
Free activities  
for families.

**Garden to Glass:  
Cocktails with Tunes**  
6-7:30 pm  
Included with  
admission, cocktails  
additional.

(July 4: No Discovery  
Station or Garden  
to Glass)

### Thursday

#### Sanimax Concerts

Jun 21-Aug 16  
6-7:30 pm

Free/GBBG  
Member;

\$15/Family (2 adults  
& children 18 & under  
in the household or  
grandchildren)

\$10/Adult

\$8/Seniors (62+)

\$5/Child (3-12 yrs)

Free/Children 2  
& Under

\*Tax not included.

#### Seeds to Snacks

Jun 21-Aug 16  
4-6 pm

Free with Sanimax  
Concerts admission.

(July 5: No Sanimax  
Concerts or  
Seeds to Snacks)

### Friday, Saturday & Sunday

*Self-guided  
Weekend  
Adventures:*

**Nature Connects,  
S.E.E.D. Packs,  
Scavenger Hunts  
and  
Nielsen Children's  
Garden**

### Monday

#### Express Garden Tours

Jun 4-Sept 24  
10-11 am

Free/GBBG  
Member;

Garden Admission/  
Non-Member



See calendar for entertainment lineup.

Open Daily May-August: 9 am-8 pm (July 4: 6 pm closure with limited programs)

time, so classes may risk being cancelled due to low early enrollment. Thank you!

## June

**Saturday, June 2**  
**Vic Ferrari**  
**Symphony on the Rocks**  
 6–9 pm  
**Lawn Seating Ticket:** \$30/GBBG Member; \$35/Non-Member  
**Cowles Terrace Ticket:** \$40/GBBG Member; \$45/Non-Member

**Tuesday, June 5**  
**Planting Blueberries in Containers**  
 (L/R) | 6–7:30 pm  
*Vijai Pandian, UW-Extension Horticulture Educator*  
 Pre-registration: \$7/Person  
 At the Door: \$10/Person  
*Presented in partnership with UW-Extension and N.E.W. Master Gardeners' Association*

**Wednesday, June 6**  
**BMO Harris Bank Getaway Wednesdays Garden to Glass:**  
**Erin Krebs** (jazz & blues)  
 6–7:30 pm  
 Included with admission, cocktails additional.

**Sunday, June 10**  
**Opera in the Garden featuring The Florentine Opera**  
 4–5:30 pm  
**Lawn Seating Ticket:** Register for free ticket online.  
**Cowles Terrace Ticket:** \$10/Person

**Monday, June 11**  
**Family Nature Night: Butterfly Beauties**  
 (YF/R) | 5:30–6:30 pm  
*GBBG Education Staff*  
 Free/GBBG Member Family; \$5/Non-Member Family

**Tuesday, June 12**  
**DIY Toxin-Free Summer Products**  
 (L/R) | 6–8 pm  
*Kristin Dewane, Young Living™*  
 \$23/GBBG Member;  
 \$28/Non-Member

**Nature Connects Segway Tour**  
 (R) | 6:30–7:30 pm OR 7–8 pm  
 Ages 11+  
*Segway the Fox Tours*  
 \$55/Person

**Wednesday, June 13**  
**BMO Harris Bank Getaway Wednesdays Garden to Glass:**  
**John Kelley Duo** (classical, jazz & rock) | 6–7:30 pm  
 Included with admission, cocktails additional.

**Weed & Feed**  
 (V/R) | 5–8 pm

**Friday, June 15**  
**Nature Connects Segway Tour**  
 (R) | 10–11 am OR 10:30–11:30 am  
 Ages 11+  
*Segway the Fox Tours*  
 \$55/Person

**Sunday, June 17**  
**Father's Day** | 9 am–8 pm  
 Admission is free for dads.

**Monday, June 18**  
**Community Connection: Green Bay Children's Museum Art Lab with LEGO Bricks**  
 (YF) | 5:30–6:30 pm  
 Free/GBBG Member; Garden Admission/Non-Member  
*Free admission for Green Bay Children's Museum Members, must present membership card*

**Wednesday, June 20**  
**Summer Picnic from the Garden**  
 (W/R) | 4:30–6 pm  
*Dan Stone, Chef*  
 \$28/GBBG Member;  
 \$33/Non-Member

**BMO Harris Bank Getaway Wednesdays Garden to Glass:**  
**Haley Grace** (guitar, vocals & beatboxing)  
 6–7:30 pm  
 Included with admission, cocktails additional.

**Thursday, June 21**  
**Sanimax Concerts: Big Mouth & the Power Tool Horns** (blues, funk, classics, rock & roll)  
 6–7:30 pm

**Friday, June 22**  
**Garden Sprouts: Ants Go Marching**  
 (YF/R) | 10–11:30 am  
*Amy Kopp, GBBG Education Docent*  
 Price per one adult and one child, age 3–5. Additional children half price.  
 \$8/GBBG Member;  
 \$13/Non-Member

**Sunday, June 24**  
**Nature Connects Build-tanical Challenge Showcase**  
 10 am–4 pm  
 Cookout 11 am–1 pm  
 Free/GBBG Member;  
 Garden Admission/Non-Member

**Monday, June 25**  
**Green Bay Kids' Day**  
 9 am–1 pm  
 Children 17 and under receive free admission with one paid adult.

**Robotics with LEGO Mindstorms**  
 (YF/R) | 10 am–12 pm  
 Ages 8–12  
*Melinda Pollen, 4-H Youth Development Educator*  
 \$12/GBBG Member;  
 \$15/Non-Member

**Tuesday, June 26**  
**Camp GBBG: Critter Safari**  
 (YF/R) | 9:30 am–3:30 pm  
 Ages 6–8  
 \$35/GBBG Member;  
 \$45/Non-Member  
*Register by June 19*

**Silk Painting Workshops:**  
*Sandy Melroy, Silk Sensations*

**Silk Suncatchers featuring Birds of the Garden**  
 (W/R) | 9:30–11:30 am; Ages 10 & up  
 \$20/GBBG Member;  
 \$24/Non-Member

**Silk Pillow Covers featuring Birds & Flowers of the Nature Connects Sculptures**  
 (W/R) | 1–4 pm; Adults  
 \$35/GBBG Member;  
 \$42/Non-Member

**Nature & Forest Therapy Guided Walk**  
 (R) | 6–7:30 pm  
*Tina Wagner, Forest Therapy Guide*  
 \$20/GBBG Member;  
 \$24/Non-Member

**Wednesday, June 27**  
**BMO Harris Bank Getaway Wednesdays Garden to Glass:**  
**Tae Popour** (blues, rock & soul)  
 6–7:30 pm  
 Included with admission, cocktails additional.

**Thursday, June 28**  
**Sanimax Concerts: Bay Area Big Band**  
 (jazz, swing & big band tunes)  
 6–7:30 pm

## July

**Sunday, July 1**  
**Pops Concert featuring Civic Symphony of Green Bay**  
 6–7:30 pm  
**Lawn Seating Ticket:** Register for free ticket online.  
**Cowles Terrace Ticket:** \$10/Person

**Wednesday, July 4**  
**Independence Day**  
 9 am–6 pm  
 Free admission for military personnel and veterans.

W = Workshop  
 L = Lecture  
 YF = Youth & Family  
 V = Volunteer Event  
 R = Registration Required

Descriptions and details can be found at [www.GBBG.org](http://www.GBBG.org)

# Summer Calendar

Don't delay! Register right away as classes may fill quickly. We also value our instructors'

**Monday, July 9**  
**Camp GBBG:**  
**Garden Passport**  
(YF/R) | 9:30 am–3:30 pm  
Ages 9–12  
\$35/GBBG Member;  
\$45/Non-Member  
*Register by July 2*

**Community Connection:**  
**Barnes & Noble Build Event**  
(YF) | 5–7 pm  
Free/GBBG Member;  
Garden Admission/Non-Member  
*\*Free admission for Barnes & Noble members, must present membership card. Optional LEGO minifigure mystery bag available for \$4. Registration required.*

**Tuesdays,**  
**July 10, 17, 24, 31, August 7**  
**Hatha Yoga**  
(W/R) | 7–8 am  
*Tree Janzen, Tree's Yoga*  
Full Series: \$40/GBBG Member;  
\$45/Non-Member  
Drop in per class: \$10/GBBG Member & Non-Member

**Tuesday, July 10**  
**Camp GBBG:**  
**Mini-Movie Makers**  
(YF/R) | 9:30 am–3:30 pm  
Ages 13–16  
\$35/GBBG Member;  
\$45/Non-Member  
*Register by July 3*

**DIY Hypertufa Planter**  
(W/R) | 6–8 pm  
*Steve Schultz, Steve's Leaves*  
\$40/GBBG Member;  
\$48/Non-Member

**Nature Connects**  
**Segway Tour**  
(R) | 6:30–7:30 pm OR 7–8 pm  
Ages 11+  
*Segway the Fox Tours*  
\$55/Person

**Wednesday, July 11**  
**BMO Harris Bank**  
**Getaway Wednesdays**  
**Garden to Glass:**  
**Everson Starcheck**  
(acoustic classic rock)  
6–7:30 pm  
Included with admission,  
cocktails additional.

**Weed & Feed**  
(V/R) | 5–8 pm

**Thursday, July 12**  
**Sanimax Concerts:**  
**Daddy D Productions**  
(singing, acting & dancing)  
6–7:30 pm

**Monday, July 16**  
**Family Nature Night:**  
**Dancing Dragonflies**  
(YF/R) | 5:30–6:30 pm  
*GBBG Education Staff*  
Free/GBBG Member Family;  
\$5/Non-Member Family

**FULL: Painting the Garden**  
**in Watercolor** (July 16 & 17)  
(W/R) | 9:30 am–3:30 pm  
*Bridget Austin, Professional Watercolor Artist*  
2-Day Workshop: \$110/GBBG Member; \$128/Non-Member  
This class is full. To add your name to the waiting list, call 920.490.9457.

**Tuesday, July 17**  
**Nature & Forest**  
**Therapy Guided Walk**  
(R) | 6–7:30 pm  
*Tina Wagner, Forest Therapy Guide*  
\$20/GBBG Member;  
\$24/Non-Member

**Wednesday, July 18**  
**BMO Harris Bank**  
**Getaway Wednesdays**  
**Garden to Glass:**  
**SevenFunk** (vocal jazz & acoustic guitar) | 6–7:30 pm  
Included with admission,  
cocktails additional.

**Cook With Me:**  
**Garden Spreads & Dips**  
(W/R) | 6–7:30 pm  
*Linda Gustke, GBBG Education Manager*  
\$12/GBBG Member;  
\$15/Non-Member

**Thursday, July 19**  
**Sanimax Concerts:**  
**Copper Box** (Americana)  
6–7:30 pm

**Friday, July 20**  
**LEGO Minifigures Movies**  
(YF/R) | 8–11 am, Ages 7-14  
*Marc Amenson, Amenson Studio*  
\$16/GBBG Member;  
\$20/Non-Member

**Garden Sprouts:**  
**Pollination Play**  
(YF/R) | 10–11:30 am  
*GBBG Education Staff*  
Price per one adult and one child, age 3-5. Additional children half price.  
\$8/GBBG Member;  
\$13/Non-Member

**Nature Connects**  
**Segway Tour**  
(R) | 10–11 am OR 10:30–11:30 am  
Ages 11+  
*Segway the Fox Tours*  
\$55/Person

**Monday, July 23**  
**Camp GBBG:**  
**Creative Construction**  
**Weeklong Camp**  
(YF/R): July 23–27  
9:30 am–12 pm  
Ages 6–8  
\$65/GBBG Member;  
\$85/Non-Member  
*Register by July 16*

**Tuesdays, July 24 & July 31**  
**DIY Flower Garden Stake**  
(W/R) | 6–7:30 pm  
*Amy Zander, Amy Zander Studio*  
\$55/GBBG Member;  
\$65/Non-Member

**Wednesday, July 25**  
**BMO Harris Bank**  
**Getaway Wednesdays**  
**Garden to Glass:**  
**Charlie Urick** (acoustic jazz)  
6–7:30 pm  
Included with admission,  
cocktails additional.

**Thursday, July 26**  
**Sanimax Concerts:**  
**N.E.W. Piano Guys**  
(dueling pianos & comedy)  
6–7:30 pm

**Monday, July 30**  
**Camp GBBG:**  
**Creative Construction**  
**Weeklong Camp**  
(YF/R): July 30–Aug 3  
9:30 am–12 pm; Ages 9-12  
\$65/GBBG Member;  
\$85/Non-Member  
*Register by July 16*

## August \_\_\_\_\_

**Wednesday, August 1**  
**BMO Harris Bank**  
**Getaway Wednesdays**  
**Garden to Glass:**  
**Derrick Holt**  
(turntables featuring jazz)  
6–7:30 pm  
Included with admission,  
cocktails additional.

**Thursday, August 2**  
**Sanimax Concerts: Kevin**  
**Van Ess & Talk of the Town**  
(New Orleans jazz)  
6–7:30 pm

**Friday, August 3**  
**Sounds of Nashville**  
7–9 pm | Tickets on sale June 1  
Ticket pricing online at  
[GBBG.org/Nashville](http://GBBG.org/Nashville)

**Monday, August 6**  
**Family Nature Night:**  
**Searching for Spiders**  
(YF/R) | 5:30–6:30 pm  
*GBBG Education Staff*  
Free/GBBG Member Family;  
\$5/Non-Member Family

Pull Out this Calendar Insert

Descriptions and details can  
be found at [www.GBBG.org](http://www.GBBG.org)



time, so classes may risk being cancelled due to low early enrollment. Thank you!

### Tuesday, August 7

**Nature & Forest  
Therapy Guided Walk**  
(R) | 6–7:30 pm  
*Tina Wagner, Forest Therapy Guide*  
\$20/GBBG Member;  
\$24/Non-Member

### Wednesday, August 8

**BMO Harris Bank  
Getaway Wednesdays  
Garden to Glass: Randi Fay**  
(jazz, blues & rock)  
6–7:30 pm  
Included with admission,  
cocktails additional.

### Weed & Feed

(V/R) | 5–8 pm

### Thursday, August 9

**Sanimax Concerts:  
Patchouli** (Indie acoustic, folk,  
pop, flamenco & jazz)  
6–7:30 pm

### Sunday, August 12

**GBBG Corporate Partner  
Employee Day**  
9 am–8 pm

### Monday, August 13

**Camp GBBG:  
Garden Passport**  
(YF/R) | 9:30 am–3:30 pm  
Ages 6–8  
\$35/GBBG Member;  
\$45/Non-Member  
*Register by August 6*

### Community Connection:

**NEW Zoo Zoomobile**  
(YF) | 5:30–6:30 pm  
Free/GBBG Member;  
Garden Admission/Non-Member

### Tuesday, August 14

**Camp GBBG:  
Mini-Movie Makers**  
(YF/R) | 9:30 am–3:30 pm  
Ages 9–12  
\$35/GBBG Member;  
\$45/Non-Member  
*Register by August 7*

### Art Night

(W/R) | 6–8:30 pm  
*Amy Zander, Amy Zander Studio*  
\$38/GBBG Member;  
\$44/Non-Member

### Nature Connects Segway Tour

(R) | 6:30–7:30 pm OR 7–8 pm  
Ages 11+  
*Segway the Fox Tours*  
\$55/Person

### Wednesday, August 15 BMO Harris Bank Getaway Wednesdays Garden to Glass: Antonio Salerno

(Brazilian jazz, rock & pop)  
6–7:30 pm  
Included with admission,  
cocktails additional.

### Thursday, August 16

**Sanimax Concerts:  
Cool Waters Band**  
(vintage rock & roll) | 6–7:30 pm

### Friday, August 17

**Garden Sprouts: Turtle Time**  
(YF/R) | 10–11:30 am  
*GBBG Education Staff*  
Price per one adult and one  
child, age 3–5. Additional  
children half price.  
\$8/GBBG Member;  
\$13/Non-Member

### Nature Connects Segway Tour

(R) | 10–11 am OR 10:30–11:30 am  
Ages 11+  
*Segway the Fox Tours*  
\$55/Person

### Nature Connects Block Party featuring *The LEGO Movie*

(YF) | 6–10 pm  
Movie starts at 8 pm.  
Free/GBBG Member;  
Garden Admission/Non-Member

W = Workshop

L = Lecture

YF = Youth & Family

V = Volunteer Event

R = Registration Required

### Wednesday, August 22

**BMO Harris Bank  
Getaway Wednesdays  
Garden to Glass:  
Haley Grace**  
(guitar, vocals & beatboxing)  
6–7:30 pm  
Included with admission,  
cocktails additional.

### Thursday, August 23

**Macro Photography**  
(W/R) | 5:30–7:30 pm  
*Marc Amenson, Amenson Studio*  
\$16/GBBG Member;  
\$20/Non-Member

### Sunday, August 26

**Grass Roots Festival**  
12–7 pm | Tickets on sale June 1  
**Lawn Seating Ticket:**  
Register for free ticket online  
**Cowles Terrace Ticket:**  
\$10/Person

### Wednesday, August 29

**BMO Harris Bank  
Getaway Wednesdays  
Garden to Glass:  
John Kelley Duo**  
(classical, jazz & rock)  
6–7:30 pm  
Included with admission,  
cocktails additional.

## Save the Dates

### Thursday, September 6

**Field to Fork**  
5–8 pm  
\$150/Person  
Limited seating,  
reservation required.  
**Registration Begins:**  
Garden Angel and above  
Members: June 7–June 14  
All Garden Members:  
June 15–June 22  
Open to the General Public:  
June 23–until full

### Friday, September 21

**Brews, Bistros & Bonfires**  
6:30–9:30 pm  
Tickets on sale June 1  
**Lawn Seating Ticket:**  
\$20/GBBG Member;  
\$25/Non-Member  
**Cowles Terrace Ticket:**  
\$35/GBBG Member;  
\$40/Non-Member

### Saturday, September 29

**Fall Family Festival**  
9 am–4 pm  
Free admission.

### How to Register

Pre-registration required for all classes and programs except where noted. Register online at [www.GBBG.org](http://www.GBBG.org) or by phone at 920.490.9457. Please register early; class sizes are limited or classes may be cancelled due to low early enrollment. To hold your space, payment is due with registration.

### After You Register

We will contact you the week of the class to confirm your enrollment. Please dress according to the weather for all outdoor programs. No rain dates are planned. Classes open one half-hour before starting time.

### Cancellations & Refunds

Classes cancelled due to low enrollment or hazardous weather conditions are refunded automatically. You will be notified by phone if a class is cancelled. In cases of inclement weather, call 920.491.3691 ext. 122 to check the status of the class. If you must cancel your registration, your fees will be refunded if notice is received **at least five days prior** to the class. Green Bay Botanical Garden cannot refund fees requested on or after the start date of a class or for sessions missed due to student illness or other personal situations.



# Lettuce Turnip the Beet

Join the food movement and cook loud, be healthy and eat fresh with these tips from our expert.

**Lindsay Hendricks,**  
*Assistant Director of Horticulture*

Lettuce crank up the volume on our cooking this summer and eat fresh! Beat the grocery store lines and grow your own veggies to have access to the freshest produce available. Don't have room for a garden? Visit your local farmers market. Turnip the heat and cook with some new and exciting varieties you've never tried before. Cook loud. Be healthy. Eat fresh. Join the food movement!

**What are some good veggies to grow?** If you are new to gardening, start with a few easy-to-grow veggies and expand your palate from there. Try some All-America Selections (AAS) winners listed below. Winning year is in parenthesis.

- Sandy lettuce, *Lactuca sativa* (2015)
- Tokyo Cross turnip, *Brassica rapa* subsp. *rapa* (1969)
- Avalanche beet, *Beta vulgaris* (2015)
- Purple Haze carrot, *Daucus carota* (2006)
- Valentine tomato, *Solanum lycopersicum* (2018)
- Roulette pepper, *Capsicum chinense* (2018)
- Delfino cilantro, *Coriandrum sativum* (2006)
- Sweet Baby radish, *Raphanus sativus* (2016)
- Seychelles pole bean, *Phaseolus vulgaris* (2017)

**How do I grow my veggies?** If you choose to start your veggies from seed, start indoors following the instructions on the seed packets, as each type of plant may have different growing requirements. Most prefer full sun and regular watering. Check out our Facebook Live segments from March and April for more details.

**Why should I eat my veggies?** Did you know that 2018 has been named the Year of the Beet by the National Garden Bureau? Beets are high in fiber, vitamins A and C, and have more iron than most vegetables. They are also rich in antioxidants, calcium, potassium, phosphorus and folic acid. Sounds pretty healthy, right?

Make sure to come check out the Partnership Gardens and Children's Gardening Patch this summer where we will be growing many All-America Selections winning vegetables. And don't forget to check our summer class schedule for classes on herbs and summer picnics. Bon appétit!



## Featured Recipe

### Beets Glazed with Blood Orange Juice & Honey

You may think of beets as hearty fall and winter food, but sweet oranges and bright, fresh fennel makes this salad a treat for spring's first warm days when we're still cooking with winter storage veggies.

#### For salad:

- 3 large beets, diced 1/2" pieces
- 2 blood oranges, finely zested and juiced (about 1/3 cup)
- 1 tbs honey
- 1 tbs olive oil
- 2 tbs toasted fennel seeds
- white pepper
- 1/2 cup crumbled queso fresco or feta cheese
- 1 head butter lettuce

#### For vinaigrette:

- 1 shallot, minced
- 1/3 cup sherry or cider vinegar
- 1 tsp Dijon mustard
- 2/3 cup olive oil - the good stuff!

#### Directions:

Place beets in steamer basket over water with 1 tbs orange zest. Steam beets over high heat until just tender, 15-20 minutes, adding water if needed.

Make vinaigrette: In medium bowl, whisk together shallot, vinegar and mustard. Season with salt and pepper. Add oil in a thin stream, while whisking, to form a creamy emulsion.

Separate lettuce leaves and place in large bowl. Dress lightly with vinaigrette.

Warm olive oil in a 12" skillet over medium heat. Add beets and cook 2 minutes. Whisk together juice and honey and add to pan. Increase heat to medium-high and cook until liquid reduces and glazes beets. Season with white pepper and salt.

Toss beets with fennel seeds, cheese and remaining zest, and serve over dressed lettuce leaves. Enjoy!

*Recipe Source: [ngb.org/year-of-the-beet](http://ngb.org/year-of-the-beet)*

Visit our website to get started with delicious recipes at [GBBG.org/Recipes](http://GBBG.org/Recipes)



# Make the Difference

**110 Individuals donated nearly 9,000 hours in 2017 to give visitors an unforgettable experience at the Garden.**

Our volunteers are truly the heart and soul of the Garden. Without them, we could not provide quality programs and services, exceptional special events or a beautifully maintained Garden. In 2017, the following volunteers donated between 25-389 hours of their time for a total of over 8,926 hours – saving us more than \$215,474 in staff time!

### 24-49 Hours

Julia Johnson.....25.00  
 Dixie Tubbs.....25.25  
 Robert A. Servais.....25.25  
 Patricia Landwehr.....25.75  
 Michael Raymaker.....26.00  
 Susan Touscany.....26.25  
 Kimberly Perry.....26.50  
 Dale Hutjens.....27.00  
 Jim LeClair.....27.50  
 Sandra Johnson.....27.50  
 Julie M. Vlasnik.....28.00  
 Kylie Brandner.....28.25  
 Connie Brauer.....28.50  
 Kathleen Spevacek.....30.00  
 Glenn Spevacek.....30.00  
 Bonita MacSwain.....30.50  
 Diane Conway.....31.50  
 Val Osinga.....32.00  
 Bonnie Keebler.....32.25  
 Bill Jones.....32.50  
 Nancy J. Whitfield.....32.75  
 Rochelle A. Kugel.....33.00  
 Steve Beerntsen.....33.00

Mary Silha.....34.50  
 Evelyn Burger.....34.50  
 Patty Pape.....35.00  
 Barbara Beaver.....36.25  
 Shirley Maenner.....36.50  
 Beth Duncan.....36.75  
 Richard Rankin.....37.00  
 Thomas L. Aerts.....38.25  
 Darlene Charneski.....38.50  
 Emma Wacek.....39.00  
 Bill Larsen.....39.25  
 Amy Kopp.....40.00  
 Linda Tingley.....40.25  
 Dana Kinan.....40.50  
 Carol Kroscher.....40.50  
 Lee C. Hansen.....43.00  
 Gloria Treptow.....43.50  
 John R. Oates.....44.50  
 Jonie Paye.....44.50  
 Lise Gammeltoft.....46.50  
 Anita LeClair.....47.00  
 Julie Arneith.....49.75  
 Pam Charlier.....49.75

### 50-74 Hours

Mary Van Dyck.....50.25  
 Michael Smullen.....52.00  
 Dan Brunmeier.....53.75  
 James LaFond.....54.50  
 Nancy Kwaterski.....57.50  
 Linda Jolly.....57.75  
 Jan LaSota.....58.50  
 Jean Sweetland.....59.25  
 Gene Arendt.....59.50  
 Cheryl Zimmerman.....59.50  
 Betty Donovan.....62.50  
 Denise Badour.....63.50  
 Elizabeth Obenberger.....65.00  
 Doug Hartman.....65.50  
 Karen Rasmussen.....65.50  
 Kathy Joas.....67.25  
 Cynthia Bayless.....68.50  
 Carol Zabel.....72.50  
 Nancy Jones.....72.50  
 Linda Schulze.....74.25  
 Diane M. Aubry.....74.50

### 75-99 Hours

Kathy Amenson.....75.00  
 Barbara Wagner.....77.00  
 Linda Barrette.....78.00  
 Mary Borley.....79.25  
 Catherine Jacobs.....82.50  
 Elinor Thomas.....92.25  
 Janet Hendricks.....93.50  
 Bob Hutter.....94.00  
 Mike Duncan.....95.50  
 Marcia Ward.....96.00  
 Carolyn Haglund.....96.50

### 100+ Hours

Sally Peck.....103.75  
 John Jacobs.....105.50  
 Debra Freeman.....108.50  
 Laura Davister.....111.75  
 Dale R. Bartel.....112.50  
 Leroy Zaddack.....117.25  
 William Wangerin.....118.00  
 Lee Richardson.....118.00  
 Kathy Hartman.....118.00

Karen Moreaux.....120.25  
 Joseph Hooyman.....121.50  
 Barb Perrus.....128.00  
 Sue Ellingson.....131.25  
 Tom Mertens.....138.00  
 Ricki Krautkramer.....142.00  
 Robert Stark.....144.00  
 Shirley Garthwaite.....151.00  
 Nancy Kohrman.....152.25  
 Maureen Ackerman.....159.75  
 Betty Arendt.....161.25  
 Carol Zellner.....162.00  
 Barbara Griffin.....162.25  
 Ann Wasurick.....166.00  
 Randy Maesch.....169.50  
 Bob Yashinsky.....171.50  
 Dave Sorenson.....175.00  
 Jana Hudson.....175.00  
 Don Jensen.....201.75  
 Bruce Kilmer.....201.75  
 Jim Tubbs.....204.00  
 Gerri Gribi.....312.75  
 Donald Giese.....389.00

## Fan Photos

Social media followers share photos of their incredible adventures at the Garden year-round. Here are some of our favorites from Spring. Post your photos of the Garden on social media with the hashtags #GBBGAdventure and #NatureConnectsGB. They may end up in our next newsletter!



Apricot Lane



relentlessadvance



srj\_art



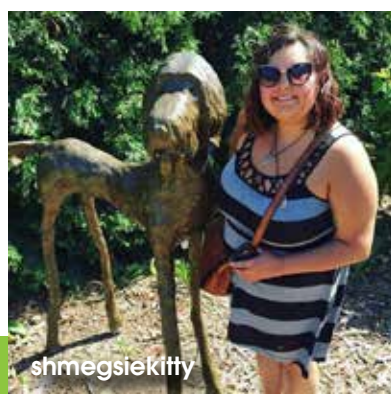
phillipstrippin



heylaurarose



marcandshayna



shmegsieKitty



erinjhanson

# BOARD OF DIRECTORS

**Executive Director**  
Susan Garot

**Board of Directors**  
Jonie Paye, Chair  
Judy Nagel, Vice Chair  
Bill Larsen, Treasurer  
Rob Servais, D.C., Secretary

**Directors**  
Tom Arndt  
Diane Conway  
Chris Del Moral-Niles  
Carol Faltynski  
Cheri Galecke  
Lise Lotte Gammeltoft  
Lee C. Hansen  
Kathy Hartman  
Robert Hill  
Robert J. Janssen  
Julia Johnson  
Pat Koleske  
Laura Nelson, M.D.  
Mike Raymaker  
Pat Schneider  
Terri Trantow  
Bill Wangerin

**Advisors**  
Dick Rankin  
Michael Salvo  
Jack Swelstad, M.D.



GREEN BAY  
**BOTANICAL GARDEN**  
*Engage. Inspire. Refresh.*

2600 Larsen Rd. • Green Bay, WI 54303

NON PROFIT ORG  
US POSTAGE  
**PAID**  
GREEN BAY WI  
PERMIT NO. 165

# WHAT'S INSIDE

A Sensational Summer Awaits You  
You Change Lives When You Leave Your Legacy  
with Plants & People  
Lettuce Turnip the Beet  
and More!

## UPCOMING EVENTS:

Nature Connects®: Art with LEGO® Bricks  
Vic Ferrari Symphony on the Rocks  
BMO Harris Bank Getaway Wednesdays  
Opera in the Garden  
*featuring The Florentine Opera*  
Sanimax Concerts  
Pops Concert  
*featuring Civic Sypmphony of Green Bay*  
Sounds of Nashville  
Grass Roots Festival