

Corporate Events at the Garden

In any season, Green Bay Botanical Garden is a unique setting for business meetings and corporate events. The Garden's 47 acres of display gardens and natural areas capture the beauty of northeastern Wisconsin's continually changing seasons. The Garden offers breathtaking beauty and memorable experiences for employees, board members, clients and vendors.

Explore the array of indoor conference rooms and meeting spaces equipped with audio-visual capabilities. The Garden is an extraordinary venue inspiring creativity, team-building and appreciation for the environment. Enjoy being refreshed by gardens overflowing with beauty and serenity.

Garden Mission

Green Bay Botanical Garden is a nonprofit organization that was opened to the public in 1996. Our mission is to stimulate an appreciation for and an understanding of the world of horticulture and the enduring relationships between plants and people. Through our volunteers and staff, we serve people of all ages by providing year-round educational and recreational experiences within an environment that enriches, inspires and refreshes. When choosing the Garden for your event, your rental fees directly support Green Bay Botanical Garden's operations and maintenance.



A Perennial Adventure.

Amenities

- ❖ Beautiful meeting spaces accommodating groups up to 270
- ❖ Admission to the Garden for your group (Not valid for special events)
- ❖ Complimentary high-speed Internet, wired and wireless
- ❖ Built-in screen and LCD projector in Cornerstone Foundation Hall and audio-visual equipment available in George Kress Foundation Suite of Classrooms
- ❖ Extraordinary outdoor Garden spaces for evening events
- ❖ A wide array of off-site catering choices for food and beverage service
- ❖ Additional activities ideal for team-building including walking tours, volunteer opportunities and hands-on demonstrations by Garden horticulturists and staff
- ❖ Complimentary parking for your guests
- ❖ Proximity to area hotels



A Perennial Adventure.

Donald & Patricia Schneider Education Center



Cornerstone Foundation Hall

The space features stunning high-ceilings with organic tones that complement exposed wood beams, large windows overlooking the Garden, beautiful botanical chandeliers and a rich colored floor. This space is available year-round.

Capacity: Up to 270 seated, based on set up.

George Kress Foundation Suite of Classrooms

Featuring floor-to-ceiling windows, natural light fills the suite. It has access to the Garden off of the soon-to-be completed adjoining patio. A Rich colored floor compliments contemporary surroundings.

The suite of classrooms can be accessed via elevator or stairs. This space is available year-round and can be used in a variety of room combinations.

Capacity: Up to 125 seated, based on set up.

Fred & Jeanne Parish Board Room

The Fred & Jeanne Parish Board Room is one of the larger classrooms with direct access to the Garden. The stand out feature of the space is the lovely "Art Meets Heart" mural, displaying hand-crafted tiles by local artists. The built-in screen is ideal for groups needing audio-visual equipment used in a variety of room combinations.

Capacity: Up to 50 seated, based on set up.

Patricia Baer Classroom

The Patricia Baer Classroom is the most intimate of the three classrooms, perfect



for small executive meetings or breakout sessions.

Capacity: Up to 40 seated, based on set up.

Nancy Gustavson Classroom

The Nancy Gustavson Classroom has direct access to the Garden. It's extensive counter space and three sinks make it the ideal location for a breakfast, lunch or dinner meeting.

Capacity: Up to 40 seated, based on set up.

A Perennial Adventure.

Outdoor Venues

Kress Oval Garden

Kress Oval Garden is a colorful perennial garden which includes a grassy area surrounded by two large white arbors, a peaceful water fountain and the beautiful Stumpf Belvedere.

Capacity: Up to 150 seated, based on set up.



Woodland Garden

Located just a short walk from the Visitor & Education Center, this venue occupies a tranquil valley. Its naturalized style contrasts beautifully with the more formal gardens that overlook it.

Capacity: Up to 150 seated, based on set up.

Jenquine Pavilion

Jenquine Pavilion is made of salvaged barn timbers and sits atop a hill alongside a council ring style overlook wall with a breathtaking view of the Garden. Native plantings including many new cultivars of coneflowers, false indigos and grasses complement the rustic structures.

Capacity: Up to 100 seated, based on set up.

Kaftan Lusthaus

Kaftan Lusthaus is an exquisite three-season gazebo with a Scandinavian design. This striking building is adorned with rosemaling in beautiful hues of yellow, blue and white. It has a tiled floor and charming chandeliers. Kaftan Lusthaus is surrounded by the beauty of the formal gardens.

Capacity: Up to 50 seated, based on set up.



A Perennial Adventure.

ACCOMMODATIONS

Comfort Suites
(920) 499-7449
www.comfortsuitesgb.com

Fairfield Inn by Marriot
(920) 497-1010
www.marriot.com/grbfi

Hyatt on Main
(920) 432-4555
www.greenbay.hyatt.com

Radisson Hotel & Conference Center
Green Bay
(920) 494-7300
www.radisson.com/greenbaywi

Tundra Lodge Resort & Waterpark
(920) 405-8700
www.tundralodge.com

BEVERAGE SERVICE

Larry Gerczak's Liquor
(920) 497-7070
www.gerczakliquor.com

CAKE & DESSERTS

Alpha Delights
(920) 339-9144
www.alphadelights.com

Harmony Café
(920) 569-1593
www.harmonycafe.org

The Runaway Spoon
(920) 624-2433
www.runspoon.com

CATERING

Alpha Delights
(920) 339-9144
www.alphadelights.com

Biebel's Catering
(920) 468-6828
www.biebelscatering.com

Crystal Coffee Café & Beanery
(920) 490-5519
www.crystalcoffeecafe.com

Harmony Café
(920) 569-1593
www.harmonycafe.org

Hyatt on Main
(920) 432-4555
www.greenbay.hyatt.com

Not By Bread Alone
(920) 429-9422
www.notbybread.com

Radisson Hotel & Conference Center
Green Bay
(920) 494-7300
www.radisson.com/greenbaywi

Renard Country Elegance Inc
(920) 432-6116
www.renardscatering.com

The Marq
(920) 532-4811
www.the-marq.com

The Runaway Spoon
(920) 624-2433
www.runspoon.com

The Traveling Chef
(920) 431-1111
www.threethreefive.com

The Wellington
(920) 499-2000
www.wellingtonsteakhouse.com

EVENT DÉCOR, DESIGN & PLANNING

Seize the Day
(920) 593-2959
www.seizethedayevents.com

FLORIST

Bouchard's Floral
(920) 496-9939
www.bouchardsfloral.com

Mayflower Greenhouse
(920) 869-2045
www.mayflowergreenhouse.com

Schroeder's Flowers, Inc.
(920) 436-6363
www.schroederflowers.com

FORMALWEAR

Du Bois Formalwear
(920) 437-9231
www.duboisformalwear.com

LINENS & CHAIR COVERS

Bay Towel
(800) 242-5606
www.baytowel.com

Seize the Day
(920) 593-2959
www.seizethedayevents.com

RENTAL EQUIPMENT

Biebel's Catering
(920) 468-6828
www.biebelscatering.com

Green Bay Exposition Services
(920) 434-0815
www.greenbayexposervices.com

Seize the Day
(920) 593-2959
www.seizethedayevents.com

PHOTOGRAPHY

Adam Shea Photography
(920) 215-1164
www.adamsheaphoto.com

Kathleen Caylor Photography
(920) 865-6500
www.caylorphoto.com

TRANSPORTATION

Lamers Bus Lines
(920) 496-3600
www.golamers.com



A Perennial Adventure.



<i>Outdoor Venues</i>	<i>Capacity</i>				<i>Rates</i>			
	Theatre	Classroom	Banquet Rounds	U-Shape	May-December Fri & Sat	May-December Sun-Thurs	January-April Fri & Sat	January-April Mon-Thurs
Kress Oval Garden	150	n/a	150	n/a	\$1550*	\$1100**	n/a	n/a
Woodland Garden	150	n/a	150	n/a	\$1050*	\$750**	n/a	n/a
Jenquine Pavilion	100	n/a	15	n/a	\$800*	\$575**	n/a	n/a
Kaftan Lusthaus	50	9	35	15	\$750*	\$525**	n/a	n/a
Stumpf Belvedere	n/a	n/a	n/a	n/a	\$150*	\$150**	n/a	n/a

(Maximum 10 People Standing Only)

<i>Indoor Venues</i>	<i>Capacity</i>				<i>Rates</i>			
	Theatre	Classroom	Banquet Rounds	U-Shape	May-December Fri & Sat	May-December Sun-Thurs	January-April Fri & Sat	January-April Mon-Thurs
Cornerstone Foundation Hall	270	162	212	n/a	\$1500***	\$1000***	\$1000***	\$750***
East Hall	130	80	100	n/a	n/a	\$750	\$500	\$375
West Hall	130	80	100	n/a	n/a	\$750	\$500	\$375
George Kress Foundation Suite of Classrooms (ABC)	125	75	89	50-60	\$500	\$300	\$300	\$200
Fred & Jeanne Parish Board Room (A)	50	36	40	24-30	\$125	\$100	\$100	\$ 75
Patricia Baer Classroom (B)	42	30	30	21-24	\$100	\$ 75	\$ 75	\$ 50
Nancy Gustavson Classroom (C)	42	30	30	21-24	\$100	\$ 75	\$ 75	\$ 50
Combined Classrooms (AB) or (BC)	80	60	60	42-48	\$250	\$150	\$150	\$125

Space is based on half day rates. Please inquire about pricing for additional time. Reservation is subject to availability.

* *Maximum rental of two hours. Includes chairs for maximum capacity.*

Prices subject to change without notice.

** *Maximum rental of four hours. Includes chairs for maximum capacity.*

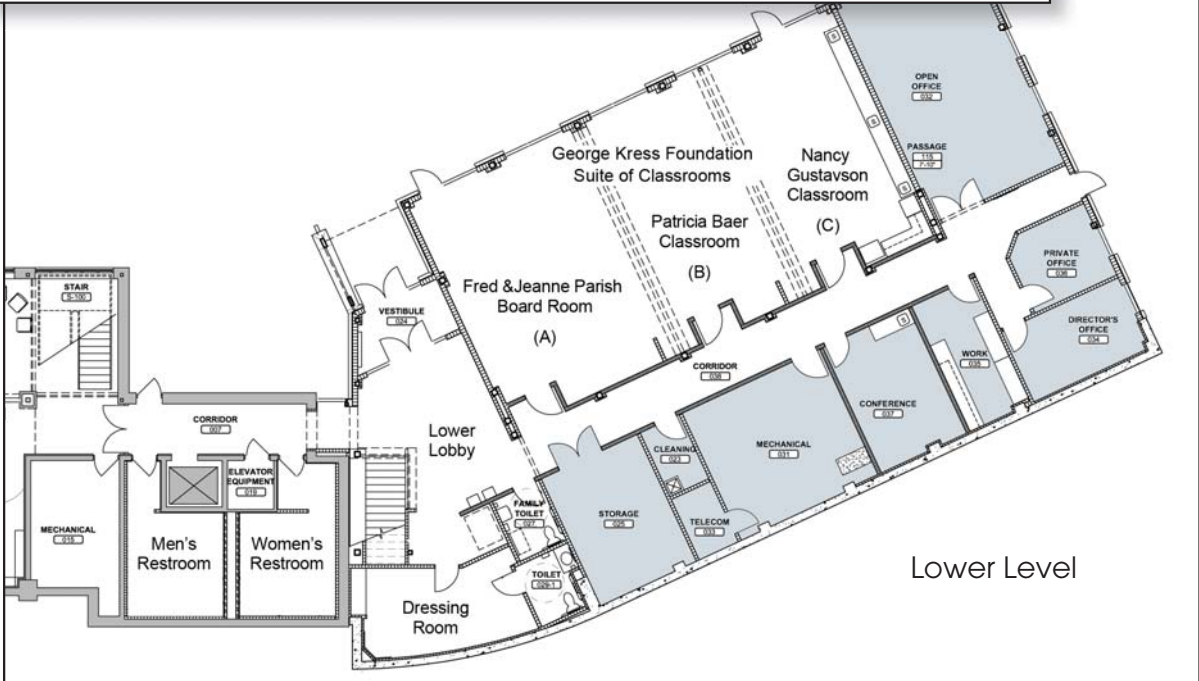
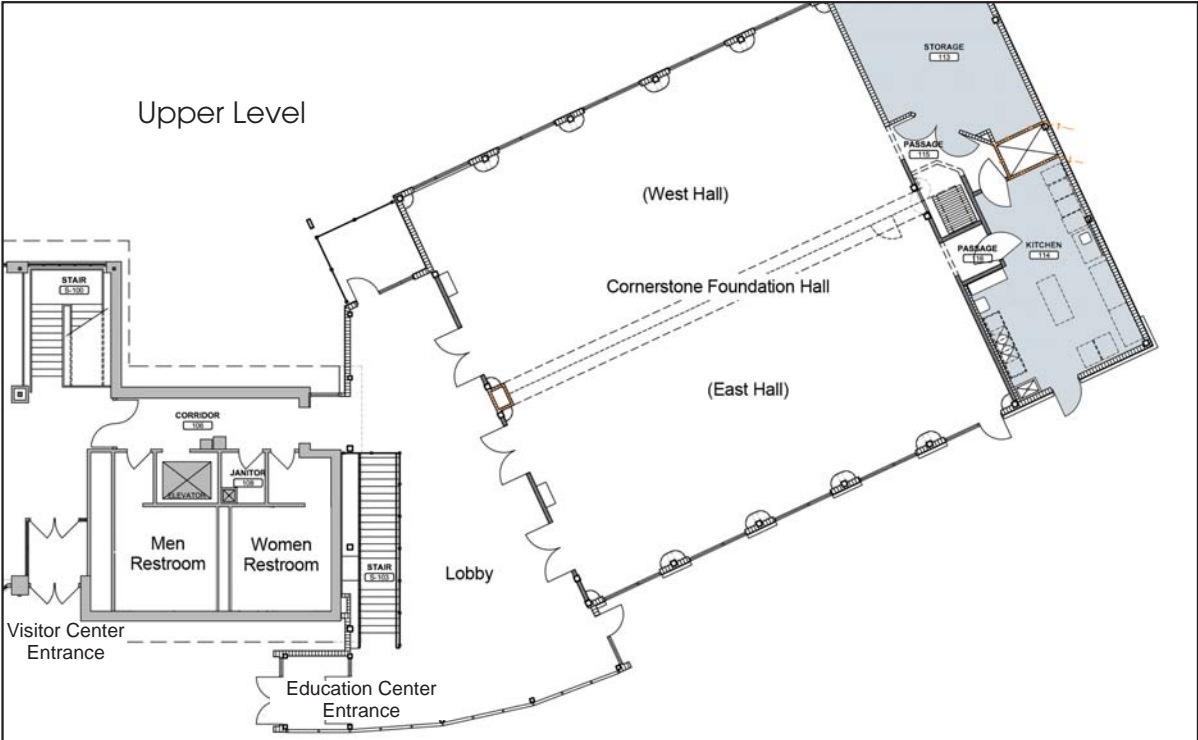
Rental fees may be subject to sales tax.

*** *Space is based on full day rates.*

Green Bay Botanical Garden - Garden Angel and above members receive a discount on rentals. Please inquire for details.



A Perennial Adventure.



A Perennial Adventure.